

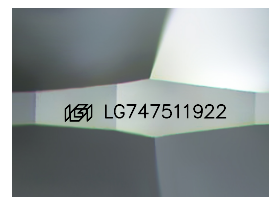
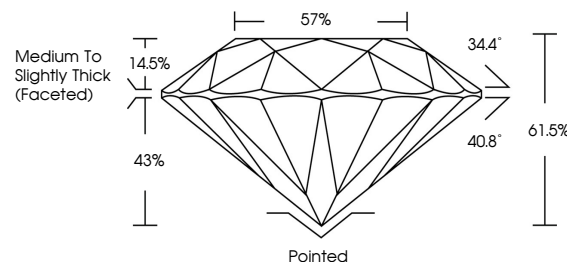


ELECTRONIC COPY

LABORATORY GROWN DIAMOND REPORT

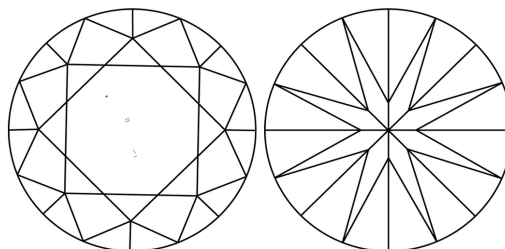
LG747511922
Report verification at lgi.org

PROPORTIONS



Sample Image Used

CLARITY CHARACTERISTICS



KEY TO SYMBOLS

Red symbols indicate internal characteristics.
Green symbols indicate external characteristics.

COLOR

D E F G H I J Faint Very Light Light

CLARITY

FL	IF	VVS ¹⁻²	VS ¹⁻²	SI ¹⁻²	I ¹⁻³
Flawless	Internally Flawless	Very Very Slightly Included	Very Slightly Included	Slightly Included	Included



January 17, 2026

IGI Report Number **LG747511922**

Description	LABORATORY GROWN DIAMOND
-------------	--------------------------

Shape and Cutting Style **ROUND BRILLIANT**

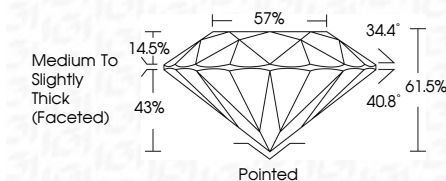
Measurements 6.56 - 6.60 X 4.05 MM

GRADING RESULTS

Carat Weight 1.08 CARAT

Color Grade **G**Clarity Grade **VVS 2**

Cut Grade **IDEAL**



ADDITIONAL GRADING INFORMATION

Polish **EXCELLENT**Symmetry **EXCELLENT**Fluorescence **NONE**Inscription(s) LG747511922

Comments: This Laboratory Grown Diamond was created by Chemical Vapor Deposition (CVD) growth process.
Type IIa



© IGI 2020, International Gemological Institute

FD - 10 20

www.igi.org

THIS DOCUMENT WAS PRODUCED WITH THE FOLLOWING SECURITY MEASURES: SPECIAL DOCUMENT PAPER, INK SCREENS, WATERMARK, BACKGROUND DESIGNS, HOLOGRAM AND OTHER SECURITY FEATURES NOT LISTED AND DO EXCEED DOCUMENT SECURITY INDUSTRY GUIDELINE

January 17, 2026
GI Report No LG747511922
ROUND BRILLIANT

1.08 CARAT	Color Weight	1.08 X 6.56 - 6.60 X 4.05 MM
G	Color Grade	
VVS 2	Clarity Grade	
IDEAL	Cut Grade	
61.05%	Depth	
57%	Table	
Medium to Slightly Thick (Faceted)	Grade	
Pointed	Culet	
EXCELLENT	Polish	
EXCELLENT	Symmetry	
NONE	Fluorescence	
4mm 127.751 1.002	Fluorescence	

Comments:
This Laboratory Grown Diamond was
created by Chemical Vapor Deposition
(CVD) growth process.