



ELECTRONIC COPY

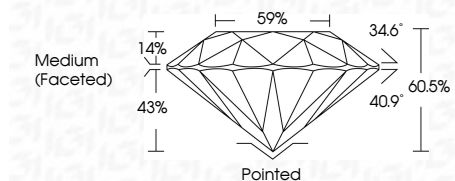
LG747511919
Report verification at igi.org



January 17, 2026
IGI Report Number **LG747511919**
Description **LABORATORY GROWN DIAMOND**
Shape and Cutting Style **ROUND BRILLIANT**
Measurements **6.52 - 6.55 X 3.96 MM**

GRADING RESULTS

Carat Weight **1.03 CARAT**
Color Grade **F**
Clarity Grade **VS 1**
Cut Grade **IDEAL**



ADDITIONAL GRADING INFORMATION

Polish **EXCELLENT**
Symmetry **EXCELLENT**
Fluorescence **NONE**
Inscription(s) **IGI LG747511919**
Comments: This Laboratory Grown Diamond was created by Chemical Vapor Deposition (CVD) growth process. Type IIa

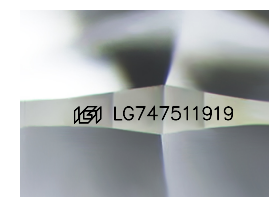


January 17, 2026
IGI Report No LG747511919
ROUND BRILLIANT
6.52 - 6.55 X 3.96 MM
1.03 CARAT
F
VS 1
IDEAL
60.5%
59%
Medium (Faceted)

Culet
Polish
Symmetry
Fluorescence
Inscription(s)

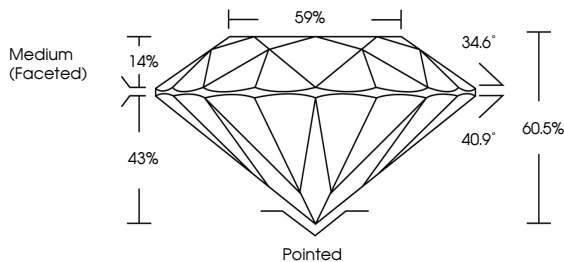
Pointed
EXCELLENT
EXCELLENT
NONE
IGI LG747511919

Comments: This Laboratory Grown Diamond was created by Chemical Vapor Deposition (CVD) growth process. Type IIa

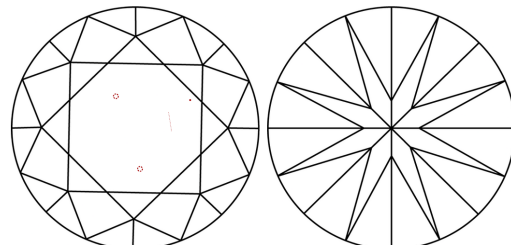


Sample Image Used

PROPORTIONS



CLARITY CHARACTERISTICS



KEY TO SYMBOLS

Red symbols indicate internal characteristics.
Green symbols indicate external characteristics.

COLOR

D E F G H I J Faint Very Light Light

CLARITY

FL	IF	VS ¹⁻²	VS ¹⁻²	SI ¹⁻²	I ¹⁻³
Flawless	Internally Flawless	Very Very Slightly Included	Very Slightly Included	Slightly Included	Included

