



ELECTRONIC COPY

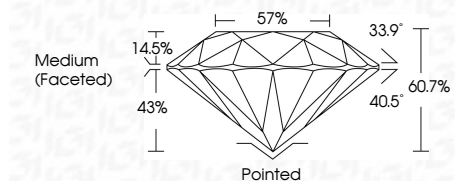
LG747511834
Report verification at igi.org



January 19, 2026
IGI Report Number **LG747511834**
Description **LABORATORY GROWN DIAMOND**
Shape and Cutting Style **ROUND BRILLIANT**
Measurements **6.79 - 6.82 X 4.13 MM**

GRADING RESULTS

Carat Weight **1.17 CARAT**
Color Grade **F**
Clarity Grade **VS 1**
Cut Grade **IDEAL**



ADDITIONAL GRADING INFORMATION

Polish **EXCELLENT**
Symmetry **EXCELLENT**
Fluorescence **NONE**
Inscription(s) **IGI LG747511834**
Comments: This Laboratory Grown Diamond was created by Chemical Vapor Deposition (CVD) growth process. Type IIa



January 19, 2026
IGI Report No LG747511834
ROUND BRILLIANT
6.79 - 6.82 X 4.13 MM
1.17 CARAT
F
VS 1
IDEAL
60.7%
57%
Medium (Faceted)
Pointed
EXCELLENT
EXCELLENT
NONE
IGI LG747511834
Comments: This Laboratory Grown Diamond was created by Chemical Vapor Deposition (CVD) growth process. Type IIa

January 19, 2026
IGI Report Number **LG747511834**
Description **LABORATORY GROWN DIAMOND**
Shape and Cutting Style **ROUND BRILLIANT**
Measurements **6.79 - 6.82 X 4.13 MM**

GRADING RESULTS

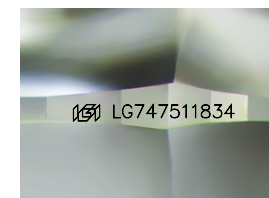
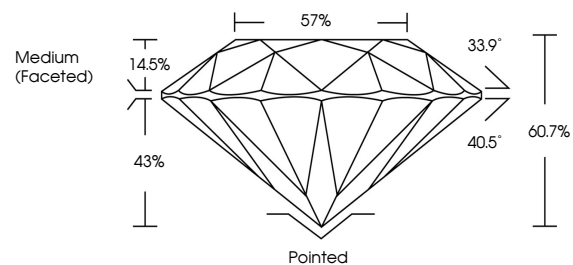
Carat Weight **1.17 CARAT**
Color Grade **F**
Clarity Grade **VS 1**
Cut Grade **IDEAL**

ADDITIONAL GRADING INFORMATION

Polish **EXCELLENT**
Symmetry **EXCELLENT**
Fluorescence **NONE**
Inscription(s) **IGI LG747511834**

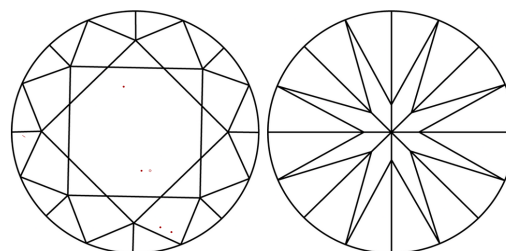
Comments: This Laboratory Grown Diamond was created by Chemical Vapor Deposition (CVD) growth process. Type IIa

PROPORTIONS



Sample Image Used

CLARITY CHARACTERISTICS



KEY TO SYMBOLS

Red symbols indicate internal characteristics.
Green symbols indicate external characteristics.

COLOR

D E F G H I J Faint Very Light Light

CLARITY

| FL | IF | VS ¹⁻² | VS ¹⁻² | SI ¹⁻² | I ¹⁻³ |
|----------|---------------------|-----------------------------|------------------------|-------------------|------------------|
| Flawless | Internally Flawless | Very Very Slightly Included | Very Slightly Included | Slightly Included | Included |

