



**ELECTRONIC COPY**

LG747511630  
Report verification at igi.org



January 19, 2026

IGI Report Number **LG747511630**

Description **LABORATORY GROWN DIAMOND**

Shape and Cutting Style **ROUND BRILLIANT**

Measurements **8.21 - 8.24 X 4.91 MM**

**GRADING RESULTS**

Carat Weight **2.04 CARATS**

Color Grade **FANCY VIVID GREEN**

Clarity Grade **VS 1**

Cut Grade **EXCELLENT**

January 19, 2026  
IGI Report Number **LG747511630**  
Description **LABORATORY GROWN DIAMOND**  
Shape and Cutting Style **ROUND BRILLIANT**  
Measurements **8.21 - 8.24 X 4.91 MM**

**GRADING RESULTS**

Carat Weight **2.04 CARATS**

Color Grade **FANCY VIVID GREEN**

Clarity Grade **VS 1**

Cut Grade **EXCELLENT**

**ADDITIONAL GRADING INFORMATION**

Polish **EXCELLENT**

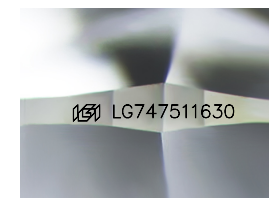
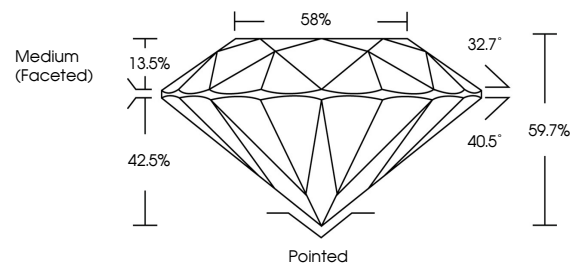
Symmetry **EXCELLENT**

Fluorescence **VERY SLIGHT**

Inscription(s) **IGI LG747511630**

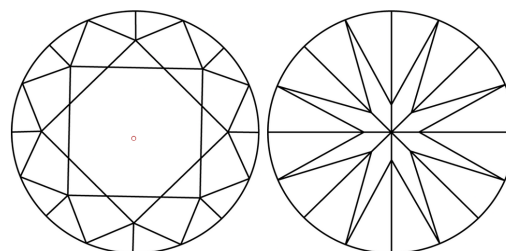
Comments: This Laboratory Grown Diamond was created by Chemical Vapor Deposition (CVD) growth process.  
Indications of post-growth treatment.

**PROPORTIONS**



Sample Image Used

**CLARITY CHARACTERISTICS**



**KEY TO SYMBOLS**

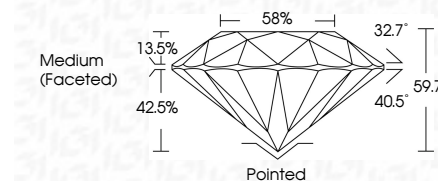
Red symbols indicate internal characteristics.  
Green symbols indicate external characteristics.

**COLOR**

D E F G H I J Faint Very Light Light

**CLARITY**

FL	IF	VS <sup>1-2</sup>	VS <sup>1-2</sup>	SI <sup>1-2</sup>	I <sup>1-3</sup>
Flawless	Internally Flawless	Very Very Slightly Included	Very Slightly Included	Slightly Included	Included



**ADDITIONAL GRADING INFORMATION**

Polish **EXCELLENT**

Symmetry **EXCELLENT**

Fluorescence **VERY SLIGHT**

Inscription(s) **IGI LG747511630**

Comments: This Laboratory Grown Diamond was created by Chemical Vapor Deposition (CVD) growth process.  
Indications of post-growth treatment.



January 19, 2026  
IGI Report No LG747511630  
**ROUND BRILLIANT**  
8.21 - 8.24 X 4.91 MM  
2.04 CARATS  
FANCY VIVID GREEN  
VS 1  
EXCELLENT  
59.7%  
58%  
Medium (Faceted)  
Pointed  
EXCELLENT  
EXCELLENT  
VERY SLIGHT  
IGI LG747511630  
Comments: This Laboratory Grown Diamond was created by Chemical Vapor Deposition (CVD) growth process.  
Indications of post-growth treatment.