



ELECTRONIC COPY

LG747510345
Report verification at igi.org



December 2, 2025

IGI Report Number **LG747510345**

Description **LABORATORY GROWN DIAMOND**

Shape and Cutting Style **ROUND BRILLIANT**

Measurements **8.97 - 9.01 X 5.52 MM**

GRADING RESULTS

Carat Weight **2.73 CARATS**

Color Grade **E**

Clarity Grade **VVS 2**

Cut Grade **IDEAL**

December 2, 2025
IGI Report Number **LG747510345**
Description **LABORATORY GROWN DIAMOND**
Shape and Cutting Style **ROUND BRILLIANT**
Measurements **8.97 - 9.01 X 5.52 MM**

GRADING RESULTS

Carat Weight **2.73 CARATS**

Color Grade **E**

Clarity Grade **VVS 2**

Cut Grade **IDEAL**

ADDITIONAL GRADING INFORMATION

Polish **EXCELLENT**

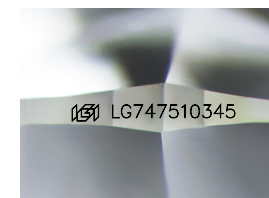
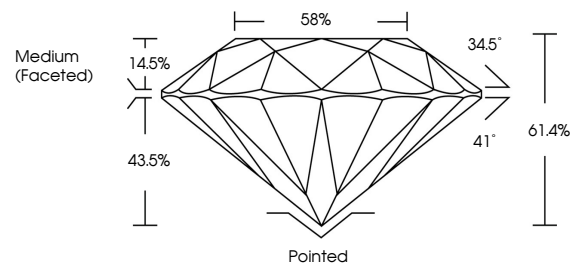
Symmetry **EXCELLENT**

Fluorescence **NONE**

Inscription(s) **IGI LG747510345**

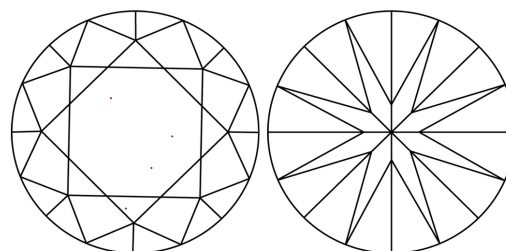
Comments: This Laboratory Grown Diamond was created by Chemical Vapor Deposition (CVD) growth process.
Type IIa

PROPORTIONS



Sample Image Used

CLARITY CHARACTERISTICS



KEY TO SYMBOLS

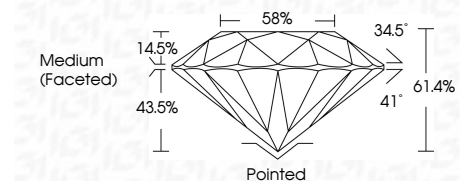
Red symbols indicate internal characteristics.
Green symbols indicate external characteristics.

COLOR

D E F G H I J Faint Very Light Light

CLARITY

FL	IF	VVS ¹⁻²	VS ¹⁻²	SI ¹⁻²	I ¹⁻³
Flawless	Internally Flawless	Very Very Slightly Included	Very Slightly Included	Slightly Included	Included



ADDITIONAL GRADING INFORMATION

Polish **EXCELLENT**

Symmetry **EXCELLENT**

Fluorescence **NONE**

Inscription(s) **IGI LG747510345**

Comments: This Laboratory Grown Diamond was created by Chemical Vapor Deposition (CVD) growth process.
Type IIa



IGI



December 2, 2025	IGI Report No LG747510345	2.73 CARATS	E	Pointed	EXCELLENT	EXCELLENT	NONE	IGI LG747510345
8.97 - 9.01 X 5.52 MM	ROUND BRILLIANT	Color Grade	VVS 2	Cut Grade	IDEAL	61.4%	58%	Medium (Faceted)
		Clarity Grade	VVS 2		IDEAL			
		Depth	61.4%					
		Table	14.5%					
		Grade						
		Polish	EXCELLENT					
		Symmetry	EXCELLENT					
		Fluorescence	NONE					
		Inscription(s)	IGI LG747510345					

Comments: This Laboratory Grown Diamond was created by Chemical Vapor Deposition (CVD) growth process.
Type IIa