

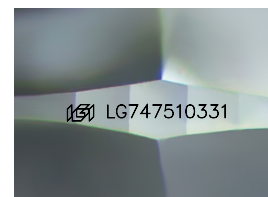
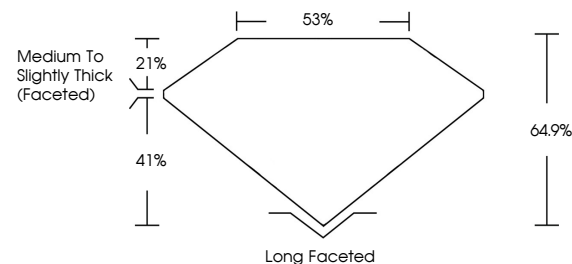


ELECTRONIC COPY

LABORATORY GROWN DIAMOND REPORT

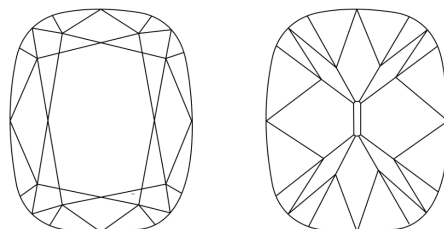
LG747510331
Report verification at igi.org

PROPORTIONS



Sample Image Used

CLARITY CHARACTERISTICS



KEY TO SYMBOLS

Red symbols indicate internal characteristics.
Green symbols indicate external characteristics.

COLOR

D E F G H I J Faint Very Light Light

CLARITY

FL	IF	VVS ¹⁻²	VS ¹⁻²	SI ¹⁻²	I ¹⁻³
Flawless	Internally Flawless	Very Very Slightly Included	Very Slightly Included	Slightly Included	Included

LABORATORY GROWN DIAMOND REPORT



November 25, 2025

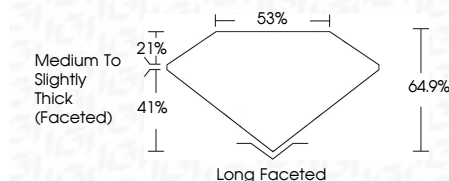
IGI Report Number **LG747510331**Description **LABORATORY GROWN DIAMOND**Shape and Cutting Style **CUSHION ANTIQUE BRILLIANT**

Measurements 8.38 X 6.19 X 4.02 MM

GRADING RESULTS

Carat Weight 1.57 CARAT

Color Grade D

Clarity Grade WS 2

ADDITIONAL GRADING INFORMATION

Polish **EXCELLENT**Symmetry **EXCELLENT**Fluorescence **NONE**Inscription(s)  LG747510331

Comments: As Grown - No indication of post-growth treatment.

This Laboratory Grown Diamond was created by High Pressure High Temperature (HPHT) growth process.

Type II

Type II



November 25, 2025	1.57 CARAT
GI Report No LG747510331	D
FUSION ANTIOXIDANT BRILLIANT	VVS 2
	64%
	83%
	Medium to slightly Thick Faceted
	Long Faceted
	EXCELLENT
	EXCELLENT
	NONE
	lg81LG747510331

Comments:

to Grow - No indication of post-growth
 The Laboratory Grown Diamond was
 created by High Pressure High
 temperature (HPHT) growth process.
 Type II

Comments:
As Grown - No indication of post-growth treatment
This Laboratory Grown Diamond was created by High Pressure High Temperature (HPHT) growth process.