



**ELECTRONIC COPY**

LG747510103  
Report verification at igi.org



November 20, 2025

IGI Report Number **LG747510103**

Description **LABORATORY GROWN DIAMOND**

Shape and Cutting Style **CUSHION MIXED CUT**

Measurements **8.12 X 7.52 X 5.35 MM**

**GRADING RESULTS**

Carat Weight **3.01 CARATS**

Color Grade **FANCY VIVID PINK**

Clarity Grade **VS 2**

**LABORATORY GROWN DIAMOND REPORT**

November 20, 2025

IGI Report Number **LG747510103**

Description **LABORATORY GROWN DIAMOND**

Shape and Cutting Style **CUSHION MIXED CUT**

Measurements **8.12 X 7.52 X 5.35 MM**

**GRADING RESULTS**

Carat Weight **3.01 CARATS**

Color Grade **FANCY VIVID PINK**

Clarity Grade **VS 2**

**ADDITIONAL GRADING INFORMATION**

Polish **VERY GOOD**

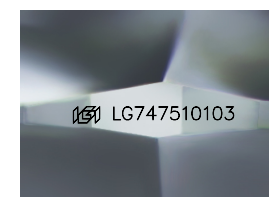
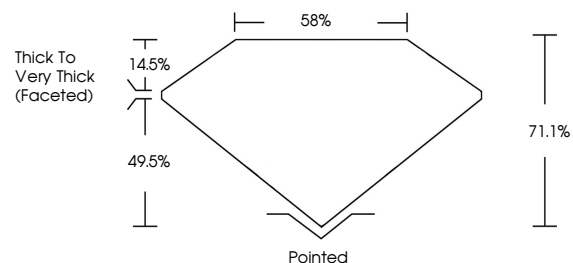
Symmetry **EXCELLENT**

Fluorescence **SLIGHT**

Inscription(s) **LG747510103**

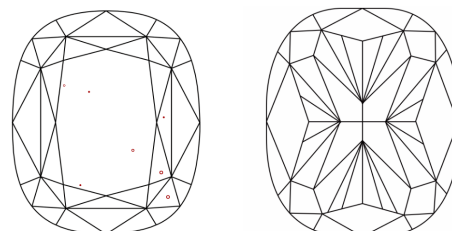
Comments: This Laboratory Grown Diamond was created by Chemical Vapor Deposition (CVD) growth process. Indications of post-growth treatment.

**PROPORTIONS**



Sample Image Used

**CLARITY CHARACTERISTICS**



**KEY TO SYMBOLS**

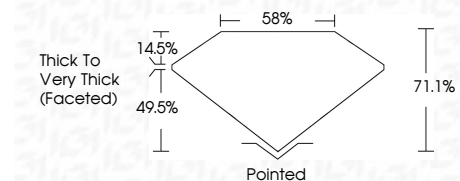
Red symbols indicate internal characteristics.  
Green symbols indicate external characteristics.

**COLOR**

D E F G H I J Faint Very Light Light

**CLARITY**

FL	IF	VS <sup>1-2</sup>	VS <sup>1-2</sup>	SI <sup>1-2</sup>	I <sup>1-3</sup>
Flawless	Internally Flawless	Very Very Slightly Included	Very Slightly Included	Slightly Included	Included



**ADDITIONAL GRADING INFORMATION**

Polish **VERY GOOD**

Symmetry **EXCELLENT**

Fluorescence **SLIGHT**

Inscription(s) **LG747510103**

Comments: This Laboratory Grown Diamond was created by Chemical Vapor Deposition (CVD) growth process. Indications of post-growth treatment.



November 20, 2025  
IGI Report No LG747510103  
CUSHION MIXED CUT

3.01 CARATS  
FANCY VIVID PINK

8.12 X 7.52 X 5.35 MM

VS 2  
71.1%  
58%

Thick to Very Thick (Faceted)

Pointed  
VERY GOOD  
EXCELLENT  
SLIGHT

Polish  
Symmetry  
Fluorescence  
Inscription(s)

LG747510103

Comments: This Laboratory Grown Diamond was created by Chemical Vapor Deposition (CVD) growth process. Indications of post-growth treatment.