



ELECTRONIC COPY

LG747508474
Report verification at igi.org



December 2, 2025

IGI Report Number **LG747508474**

Description **LABORATORY GROWN DIAMOND**

Shape and Cutting Style **ROUND BRILLIANT**

Measurements **8.36 - 8.43 X 5.21 MM**

GRADING RESULTS

Carat Weight **2.26 CARATS**

Color Grade **D**

Clarity Grade **VVS 1**

Cut Grade **IDEAL**

December 2, 2025
IGI Report Number **LG747508474**
Description **LABORATORY GROWN DIAMOND**
Shape and Cutting Style **ROUND BRILLIANT**
Measurements **8.36 - 8.43 X 5.21 MM**

GRADING RESULTS

Carat Weight **2.26 CARATS**

Color Grade **D**

Clarity Grade **VVS 1**

Cut Grade **IDEAL**

ADDITIONAL GRADING INFORMATION

Polish **EXCELLENT**

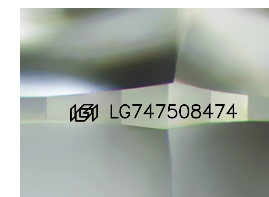
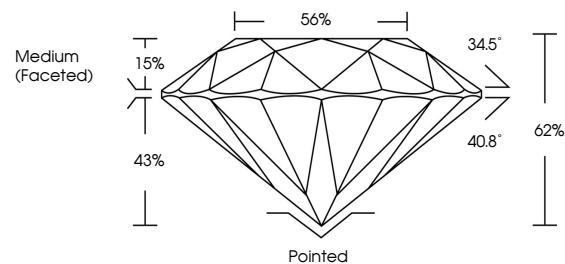
Symmetry **EXCELLENT**

Fluorescence **NONE**

Inscription(s) **IGI LG747508474**

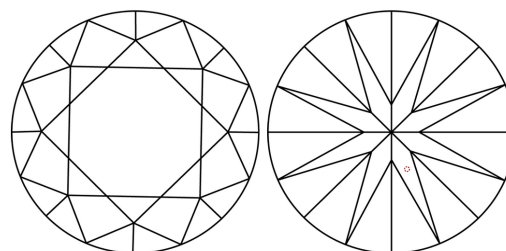
Comments: HEARTS & ARROWS
As Grown - No indication of post-growth treatment.
This Laboratory Grown Diamond was created by High Pressure High Temperature (HPHT) growth process.
Type II

PROPORTIONS



Sample Image Used

CLARITY CHARACTERISTICS



KEY TO SYMBOLS

Red symbols indicate internal characteristics.
Green symbols indicate external characteristics.

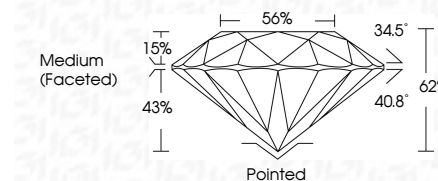


COLOR

D E F G H I J Faint Very Light Light

CLARITY

FL	IF	VVS ¹⁻²	VS ¹⁻²	SI ¹⁻²	I ¹⁻³
Flawless	Internally Flawless	Very Very Slightly Included	Very Slightly Included	Slightly Included	Included



ADDITIONAL GRADING INFORMATION

Polish **EXCELLENT**

Symmetry **EXCELLENT**

Fluorescence **NONE**

Inscription(s) **IGI LG747508474**

Comments: HEARTS & ARROWS
As Grown - No indication of post-growth treatment.
This Laboratory Grown Diamond was created by High Pressure High Temperature (HPHT) growth process.
Type II



IGI



December 2, 2025
IGI Report No LG747508474
ROUND BRILLIANT
8.36 - 8.43 X 5.21 MM
2.26 CARATS
D
VVS 1
IDEAL
62%
56%
Medium (Faceted)
Pointed
EXCELLENT
EXCELLENT
NONE
IGI LG747508474
Comments: HEARTS & ARROWS
As Grown - No indication of post-growth treatment.
This Laboratory Grown Diamond was created by High Pressure High Temperature (HPHT) growth process.
Type II