

ELECTRONIC COPY

LABORATORY GROWN DIAMOND REPORT

November 18, 2025	
IGI Report Number	LG747508048
Description	LABORATORY GROWN DIAMOND
Shape and Cutting Style	ROUND BRILLIANT
Measurements	8.26 - 8.32 X 5.10 MM
GRADING RESULTS	
Carat Weight	2.14 CARATS
Color Grade	D
Clarity Grade	VVS 1
Cut Grade	IDEAL

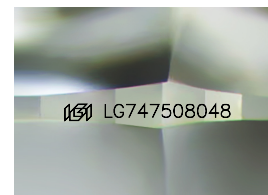
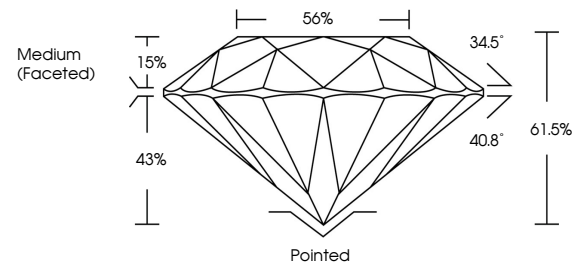
ADDITIONAL GRADING INFORMATION

Polish	EXCELLENT
Symmetry	EXCELLENT
Fluorescence	NONE
Inscription(s)	 LG747508048

Comments: As Grown - No indication of post-growth treatment.
This Laboratory Grown Diamond was created by High Pressure High Temperature (HPHT) growth process.
Type II

LG747508048
Report verification at igi.org

PROPORTIONS



Sample Image Used

COLOR

D E F G H I J Faint Very Light Light

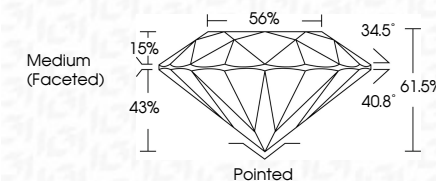
CLARITY

FL	IF	VVS ¹⁻²	VS ¹⁻²	SI ¹⁻²	I ¹⁻³
Flawless	Internally Flawless	Very Very Slightly Included	Very Slightly Included	Slightly Included	Included

LABORATORY GROWN DIAMOND REPORT



November 18, 2025	
IGI Report Number	LG747508048
Description	LABORATORY GROWN DIAMOND
Shape and Cutting Style	ROUND BRILLIANT
Measurements	8.26 - 8.32 X 5.10 MM
GRADING RESULTS	
Carat Weight	2.14 CARATS
Color Grade	D
Clarity Grade	VVS 1
Cut Grade	IDEAL



ADDITIONAL GRADING INFORMATION

Polish	EXCELLENT
Symmetry	EXCELLENT
Fluorescence	NONE
Inscription(s)	(G) LG747508048
Comments: As Grown - No indication of post-growth treatment.	
This Laboratory Grown Diamond was created by High Pressure High Temperature (HPHT) growth process.	
Type II	



© IGI 2020, International Gemological Institute

FD - 10 20

November 18, 2025
GI Report No LG747508048
ROUND BRILLIANT

2.26 - 8.32 X 5.10 MM	Carat Weight	2.14 CARATS
	Color Grade	D
	Clarity Grade	VVS 1
	Cut Grade	IDEAL
	Depth	61.05%
	Table	56%
	Grade	Medium (Faceted)
	Culet	Pointed
	Polish	EXCELLENT
	Symmetry	EXCELLENT
	Fluorescence	NONE
	Measurements	8mm (cst) 10mm (cst) 5mm (cst)

Comments:
As Grown - No indication of post-growth treatment.