



November 10, 2025

IGI Report Number **LG746548847**

PEAR BRILLIANT

LABORATORY GROWN DIAMOND

6.86 X 4.59 X 2.87 MM

Carat Weight	0.52 CARAT
Color Grade	D
Clarity Grade	VS 2
Polish	VERY GOOD
Symmetry	VERY GOOD
Fluorescence	NONE
Inscription(s)	IGI LG746548847

Comments: As Grown - No indication of post-growth treatment. This Laboratory Grown Diamond was created by High Pressure High Temperature (HPHT) growth process. Type II

LABORATORY GROWN DIAMOND REPORT

November 10, 2025

IGI Report Number **LG746548847**

Description **LABORATORY GROWN DIAMOND**

Shape and Cutting Style **PEAR BRILLIANT**

Measurements **6.86 X 4.59 X 2.87 MM**

GRADING RESULTS

Carat Weight **0.52 CARAT**

Color Grade **D**

Clarity Grade **VS 2**

ADDITIONAL GRADING INFORMATION

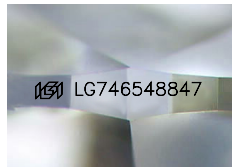
Polish **VERY GOOD**

Symmetry **VERY GOOD**

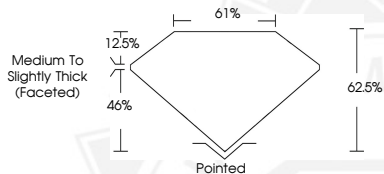
Fluorescence **NONE**

Inscription(s) **IGI LG746548847**

Comments: As Grown - No indication of post-growth treatment. This Laboratory Grown Diamond was created by High Pressure High Temperature (HPHT) growth process. Type II



Sample Image Used



November 10, 2025

IGI Report Number **LG746548847**

PEAR BRILLIANT

LABORATORY GROWN DIAMOND

6.86 X 4.59 X 2.87 MM

Carat Weight	0.52 CARAT
Color Grade	D
Clarity Grade	VS 2
Polish	VERY GOOD
Symmetry	VERY GOOD
Fluorescence	NONE
Inscription(s)	IGI LG746548847

Comments: As Grown - No indication of post-growth treatment. This Laboratory Grown Diamond was created by High Pressure High Temperature (HPHT) growth process. Type II



THIS DOCUMENT WAS PRODUCED WITH THE FOLLOWING SECURITY MEASURES: SPECIAL DOCUMENT PAPER, INK SCREENS, WATERMARK, BACKGROUND DESIGNS, HOLOGRAM AND OTHER SECURITY FEATURES NOT LISTED AND DO EXCEED DOCUMENT SECURITY INDUSTRY GUIDELINES.