



ELECTRONIC COPY

LABORATORY GROWN DIAMOND REPORT

November 3, 2025

IGI Report Number **LG746544958**

Description	LABORATORY GROWN DIAMOND
-------------	--------------------------

Shape and Cutting Style **CUSHION MODIFIED BRILLIANT**

Measurements 9.55 X 7.60 X 4.83 MM

GRADING RESULTS

Carat Weight **2.66 CARATS**

Color Grade	D
-------------	---

Clarity Grade WS 2

ADDITIONAL GRADING INFORMATION

Polish **EXCELLENT**

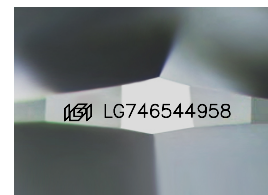
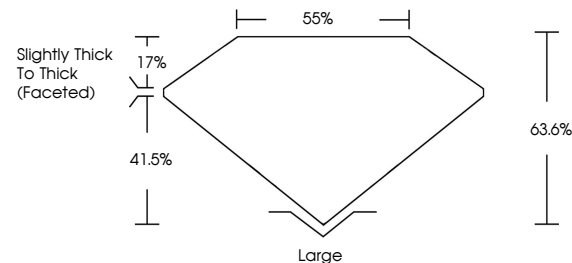
Symmetry **EXCELLENT**

Fluorescence **NONE**Inscription(s) LG746544958

Comments: This Laboratory Grown Diamond was created by Chemical Vapor Deposition (CVD) growth process.
Type IIa

LG746544958
Report verification at igi.org

PROPORTIONS



Sample Image Used

COLOR

D E F G H I J Faint Very Light Light

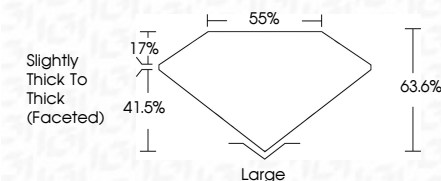
CLARITY

FL	IF	VVS ¹⁻²	VS ¹⁻²	SI ¹⁻²	I ¹⁻³
Flawless	Internally Flawless	Very Very Slightly Included	Very Slightly Included	Slightly Included	Included

LABORATORY GROWN DIAMOND REPORT



November 3, 2025	
IGI Report Number	LG746544958
Description	LABORATORY GROWN DIAMOND
Shape and Cutting Style	CUSHION MODIFIED BRILLIANT
Measurements	9.55 X 7.60 X 4.83 MM
GRADING RESULTS	
Carat Weight	2.66 CARATS
Color Grade	D
Clarity Grade	VVS 2



ADDITIONAL GRADING INFORMATION

Polish	EXCELLENT
Symmetry	EXCELLENT
Fluorescence	NONE
Inscription(s)	 LG746544958
Comments: This Laboratory Grown Diamond was created by Chemical Vapor Deposition (CVD) growth process.	
Type IIa	



© IGI 2020, International Gemological Institute

FD - 10 20



THIS DOCUMENT WAS PRODUCED WITH THE FOLLOWING SECURITY MEASURES: SPECIAL DOCUMENT PAPER, INK SCREENS, WATERMARK, BACKGROUND DESIGNS, HOLOGRAM AND OTHER SECURITY FEATURES NOT LISTED AND DO EXCEED DOCUMENT SECURITY INDUSTRY GUIDELINES

www.igi.org

November 3, 2025
 IGI Report No LG746
 CUSHION MODIFIED

2.55 X 7.60 X 4.83 MM	2.66 CARATS
Carat Weight	D
Color Grade	VS 2
Clarity Grade	63.6%
Depth	55%
Table	Slightly Thick to Thick (graded)
Girdle	Large
Quiet	EXCELLENT
Polish	EXCELLENT
Symmetry	NONE
Fluorescence	None / C121452.10053

Comments:
This Laboratory Grown Diamond was created by Chemical Vapor Deposition (CVD) growth process.