



**ELECTRONIC COPY**

LG746542978  
Report verification at igi.org



November 4, 2025

IGI Report Number **LG746542978**

Description **LABORATORY GROWN DIAMOND**

Shape and Cutting Style **ROUND BRILLIANT**

Measurements **9.24 - 9.26 X 5.75 MM**

**GRADING RESULTS**

Carat Weight **3.03 CARATS**

Color Grade **F**

Clarity Grade **VS 2**

Cut Grade **IDEAL**

November 4, 2025  
IGI Report Number **LG746542978**  
Description **LABORATORY GROWN DIAMOND**  
Shape and Cutting Style **ROUND BRILLIANT**  
Measurements **9.24 - 9.26 X 5.75 MM**

**GRADING RESULTS**

Carat Weight **3.03 CARATS**

Color Grade **F**

Clarity Grade **VS 2**

Cut Grade **IDEAL**

**ADDITIONAL GRADING INFORMATION**

Polish **EXCELLENT**

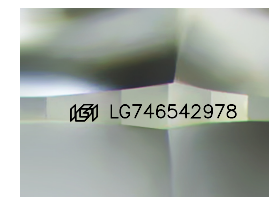
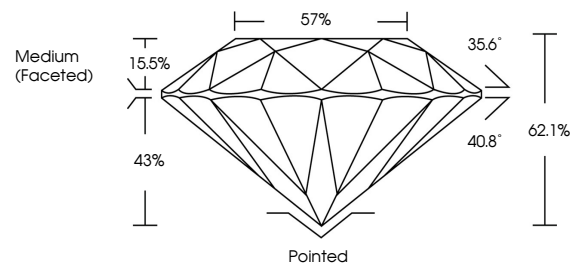
Symmetry **EXCELLENT**

Fluorescence **NONE**

Inscription(s) **LG746542978**

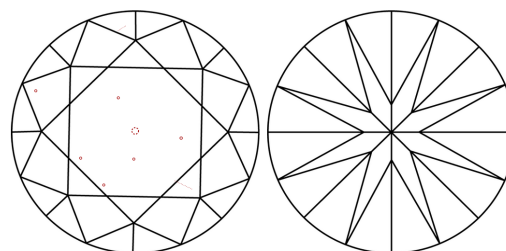
Comments: HEARTS & ARROWS  
This Laboratory Grown Diamond was created by  
Chemical Vapor Deposition (CVD) growth process.  
Type IIa

**PROPORTIONS**



Sample Image Used

**CLARITY CHARACTERISTICS**



**KEY TO SYMBOLS**

Red symbols indicate internal characteristics.  
Green symbols indicate external characteristics.

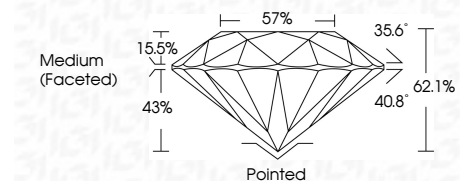


**COLOR**

D E F G H I J Faint Very Light Light

**CLARITY**

FL	IF	VS <sup>1-2</sup>	VS <sup>1-2</sup>	SI <sup>1-2</sup>	I <sup>1-3</sup>
Flawless	Internally Flawless	Very Very Slightly Included	Very Slightly Included	Slightly Included	Included



**ADDITIONAL GRADING INFORMATION**

Polish **EXCELLENT**

Symmetry **EXCELLENT**

Fluorescence **NONE**

Inscription(s) **LG746542978**

Comments: HEARTS & ARROWS  
This Laboratory Grown Diamond was created by  
Chemical Vapor Deposition (CVD) growth process.  
Type IIa



November 4, 2025  
IGI Report No **LG746542978**  
**ROUND BRILLIANT**

**3.03 CARATS**  
Carat Weight  
**F**  
Color Grade  
**VS 2**  
Clarity Grade  
**IDEAL**  
Cut Grade  
**62.1%**  
Depth  
**57%**  
Girdle  
Medium (Faceted)

Pointed  
**EXCELLENT**  
Culet  
**EXCELLENT**  
Symmetry  
**EXCELLENT**  
Fluorescence  
**NONE**  
Inscription(s)  
 **LG746542978**

Comments:  
Hearts & Arrows  
This Laboratory Grown Diamond was  
created by Chemical Vapor Deposition  
(CVD) growth process.  
Type IIa