



ELECTRONIC COPY

LABORATORY GROWN DIAMOND REPORT

November 3, 2025	
IGI Report Number	LG746542931
Description	LABORATORY GROWN DIAMOND
Shape and Cutting Style	ROUND BRILLIANT
Measurements	9.75 - 9.79 X 6.06 MM

GRADING RESULTS

Carat Weight	3.55 CARATS
Color Grade	D
Clarity Grade	VS 1
Cut Grade	IDEAL

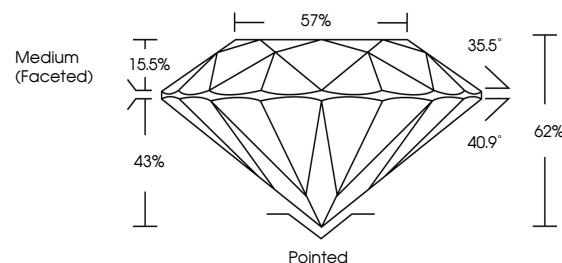
ADDITIONAL GRADING INFORMATION

Polish	EXCELLENT
Symmetry	EXCELLENT
Fluorescence	NONE
Inscription(s)	 LG746542931

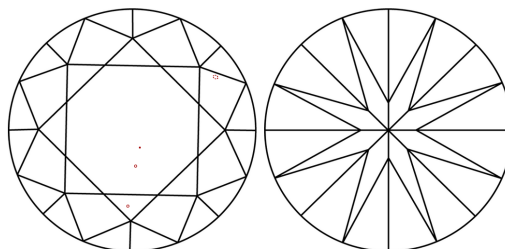
Comments: HEARTS & ARROWS
This Laboratory Grown Diamond was created by
Chemical Vapor Deposition (CVD) growth process.
Type IIa

LG746542931
Report verification at igi.org

PROPORTIONS



CLARITY CHARACTERISTICS

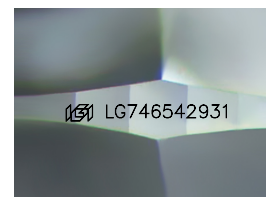


KEY TO SYMBOLS

Red symbols indicate internal characteristics.
Green symbols indicate external characteristics.



www.igi.org



Sample Image Used

COLOR

D E F G H I J Faint Very Light Light

CLARITY

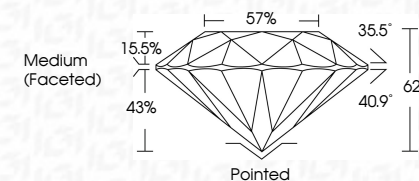
FL	IF	VVS ¹⁻²	VS ¹⁻²	SI ¹⁻²	I ¹⁻³
Flawless	Internally Flawless	Very Very Slightly Included	Very Slightly Included	Slightly Included	Included



November 3, 2025	
IGI Report Number	LG746542931
Description	LABORATORY GROWN DIAMOND
Shape and Cutting Style	ROUND BRILLIANT
Measurements	9.75 - 9.79 X 6.06 MM

GRADING RESULTS

Carat Weight	3.55 CARATS
Color Grade	D
Clarity Grade	VS 1
Cut Grade	IDEAL



ADDITIONAL GRADING INFORMATION

Polish	EXCELLENT
Symmetry	EXCELLENT
Fluorescence	NONE
Inscription(s)	LG LG746542931
<p>Comments: HEARTS & ARROWS This Laboratory Grown Diamond was created by Chemical Vapor Deposition (CVD) growth process. Type IIa</p>	



November 3, 2025	3.55 CARATS	VS 1	Pointed	Comments: HEARST & ARLOWS Diamond was certified by GIA as a natural gemstone. Created by chemical vapor deposition (CVD) growth process.
GJ Report No. GJ74652931	D	IDEAL	EXCELLENT	
ROUND BRILLIANT		62%	EXCELLENT	
		57%	NONE	
		Medium (Faceted)	1691 G74652931	
	Carat Weight	Clarity Grade	Culet	
	Color Grade	Depth	Polish	
		Table	Symmetry	
		Girdle	Fluorescence	
			Inscriptions(s)	
10.06 MM				Type IIA