

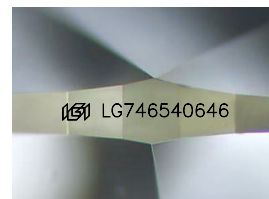
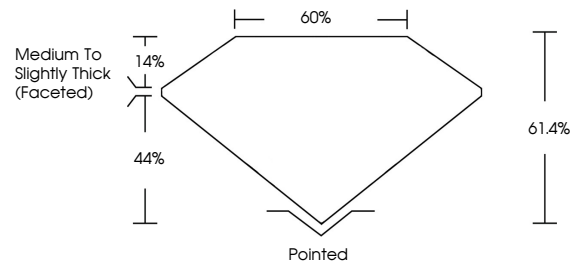


**INTERNATIONAL
GEMOLOGICAL
INSTITUTE**

ELECTRONIC COPY

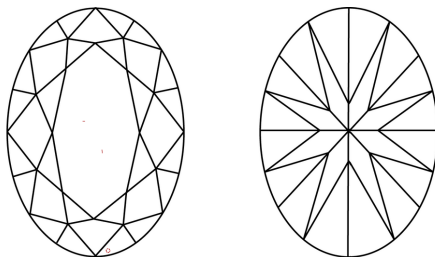
LG746540646
Report verification at igi.org

PROPORTIONS



Sample Image Used

CLARITY CHARACTERISTICS



KEY TO SYMBOLS

Red symbols indicate internal characteristics.
Green symbols indicate external characteristics.

COLOR

D E F G H I J Faint Very Light Light

CLARITY

FL	IF	VVS ¹⁻²	VS ¹⁻²	SI ¹⁻²	I ¹⁻³
Flawless	Internally Flawless	Very Very Slightly Included	Very Slightly Included	Slightly Included	Included



November 3, 2025

IGI Report Number **LG746540646**

Description	LABORATORY GROWN DIAMOND
-------------	--------------------------

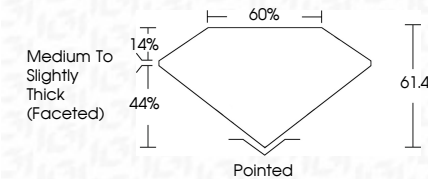
Shape and Cutting Style **OVAL BRILLIANT**

Measurements 10.44 X 7.23 X 4.44 MM

GRADING RESULTS

Carat Weight **2.07 CARATS**

Color Grade	E
-------------	---

Clarity Grade VVS 2

ADDITIONAL GRADING INFORMATION

Polish **EXCELLENT**Symmetry **EXCELLENT**Fluorescence **NONE**Inscription(s) LG74654064

Comments: This Laboratory Grown Diamond was created by Chemical Vapor Deposition (CVD) growth process.
Type IIa



IG



© IGI 2020, International Gemological Institute

FD - 10 20

www.igi.org

THIS DOCUMENT WAS PRODUCED WITH THE FOLLOWING SECURITY MEASURES: SPECIAL DOCUMENT PAPER, INK SCREENS, WATERMARK, BACKGROUND DESIGNS, HOLOGRAM AND OTHER SECURITY FEATURES NOT LISTED AND DO EXCEED DOCUMENT SECURITY INDUSTRY GUIDELINES

November 3, 2025
IGI Report No LG746
OVAL BRILLIANT

10.44 X 7.23 X 4.44 MM	Carat Weight	2.07 CARATS
	Color Grade	E
	Clarity Grade	VVS 2
	Depth	61.4%
	Table	60%
	Girdle	Medium To Slightly Thick (narrowed)
	Culet	Pointed
	Polish	EXCELLENT
	Symmetry	EXCELLENT
	Fluorescence	NONE
	Measurements (mm)	10.44 X 7.23 X 4.44

Comments:
This Laboratory Grown Diamond was created by Chemical Vapor Deposition (CVD) growth process.