



ELECTRONIC COPY

LG746535546
Report verification at igi.org



November 3, 2025

IGI Report Number **LG746535546**

Description **LABORATORY GROWN DIAMOND**

Shape and Cutting Style **ROUND BRILLIANT**

Measurements **6.56 - 6.62 X 4.16 MM**

GRADING RESULTS

Carat Weight **1.13 CARAT**

Color Grade **D**

Clarity Grade **VVS 2**

Cut Grade **EXCELLENT**

November 3, 2025
IGI Report Number **LG746535546**
Description **LABORATORY GROWN DIAMOND**
Shape and Cutting Style **ROUND BRILLIANT**
Measurements **6.56 - 6.62 X 4.16 MM**

GRADING RESULTS

Carat Weight **1.13 CARAT**

Color Grade **D**

Clarity Grade **VVS 2**

Cut Grade **EXCELLENT**

ADDITIONAL GRADING INFORMATION

Polish **EXCELLENT**

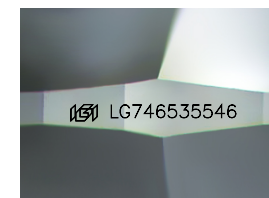
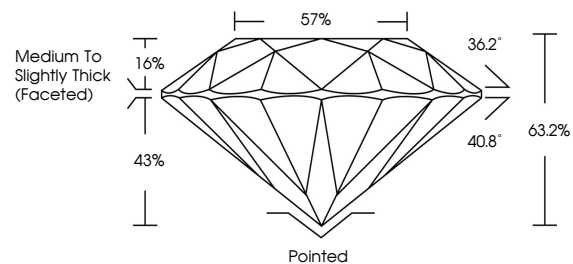
Symmetry **EXCELLENT**

Fluorescence **NONE**

Inscription(s) **LG746535546**

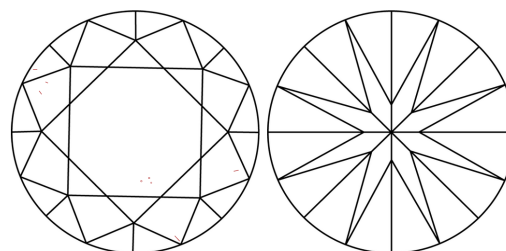
Comments: As Grown - No indication of post-growth treatment.
This Laboratory Grown Diamond was created by High Pressure High Temperature (HPHT) growth process.
Type II

PROPORTIONS



Sample Image Used

CLARITY CHARACTERISTICS



KEY TO SYMBOLS

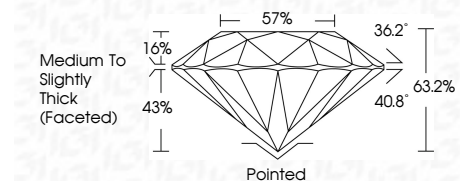
Red symbols indicate internal characteristics.
Green symbols indicate external characteristics.

COLOR

D E F G H I J Faint Very Light Light

CLARITY

FL	IF	VVS ¹⁻²	VS ¹⁻²	SI ¹⁻²	I ¹⁻³
Flawless	Internally Flawless	Very Very Slightly Included	Very Slightly Included	Slightly Included	Included



ADDITIONAL GRADING INFORMATION

Polish **EXCELLENT**

Symmetry **EXCELLENT**

Fluorescence **NONE**

Inscription(s) **LG746535546**

Comments: As Grown - No indication of post-growth treatment.
This Laboratory Grown Diamond was created by High Pressure High Temperature (HPHT) growth process.
Type II



IGI



November 3, 2025
IGI Report No LG746535546
ROUND BRILLIANT

1.13 CARAT
Carat Weight
D
Color Grade
VVS 2
Clarity Grade
EXCELLENT
Depth **63.2%**
Table **57%**
Girdle **Medium To Slightly Thick (Faceted)**

Culet **Pointed**
Polish **EXCELLENT**
Symmetry **EXCELLENT**
Fluorescence **NONE**
Inscription(s) **LG746535546**

Comments: As Grown - No indication of post-growth treatment.
This Laboratory Grown Diamond was created by High Pressure High Temperature (HPHT) growth process.
Type II