

**ELECTRONIC COPY**

## LABORATORY GROWN DIAMOND REPORT

January 15, 2026	
IGI Report Number	LG746518313
Description	LABORATORY GROWN DIAMOND
Shape and Cutting Style	ROUND BRILLIANT
Measurements	8.14 - 8.18 X 5.04 MM

## GRADING RESULTS

Carat Weight	2.04 CARATS
Color Grade	E
Clarity Grade	VS 1
Cut Grade	IDEAL

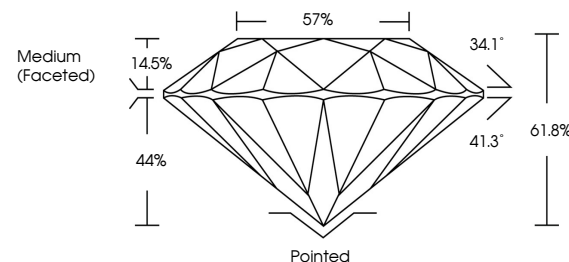
### ADDITIONAL GRADING INFORMATION

Polish	EXCELLENT
Symmetry	EXCELLENT
Fluorescence	NONE
Inscription(s)	 LG746518313

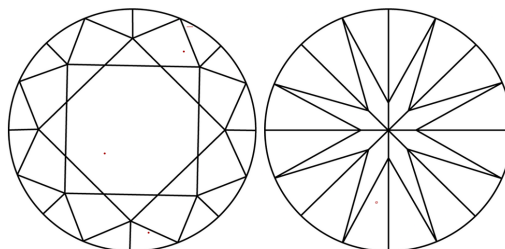
Comments: This Laboratory Grown Diamond was created by Chemical Vapor Deposition (CVD) growth process.  
Type IIa

LG746518313  
Report verification at lqi.org

## PROPORTIONS

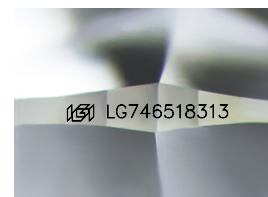


## CLARITY CHARACTERISTICS



### KEY TO SYMBOLS

Red symbols indicate internal characteristics.  
Green symbols indicate external characteristics.



Sample Image Used

## COLOR

D E F G H I J Faint Very Light Light

## CLARITY

FL	IF	VVS <sup>1-2</sup>	VS <sup>1-2</sup>	SI <sup>1-2</sup>	I <sup>1-3</sup>
Flawless	Internally Flawless	Very Very Slightly Included	Very Slightly Included	Slightly Included	Included

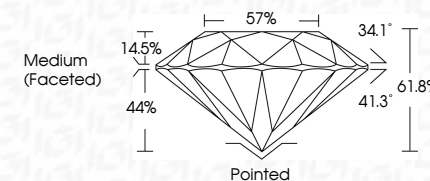
## LABORATORY GROWN DIAMOND REPORT



January 15, 2026	
IGI Report Number	LG746518313
Description	LABORATORY GROWN DIAMOND
Shape and Cutting Style	ROUND BRILLIANT
Measurements	8.14 - 8.18 X 5.04 MM

## GRADING RESULTS

Carat Weight	2.04 CARATS
Color Grade	E
Clarity Grade	VS 1
Cut Grade	IDEAL



### ADDITIONAL GRADING INFORMATION

Polish	EXCELLENT
Symmetry	EXCELLENT
Fluorescence	NONE
Inscription(s)	 LG746518313
<p>Comments: This Laboratory Grown Diamond was created by Chemical Vapor Deposition (CVD) growth process.</p> <p>Type IIa</p>	



© IGI 2020, International Gemological Institute

FD - 10 20

January 15, 2026  
 CGI Report No LG746518313  
 BOUND BRILLIANT

ROUND BRILLIANT	3.14 - 8.18 x 5.04 MM	2.04 CARATS	VS 1	Medium (Faceted)	Pointed	
	Carat Weight		IDEAL			EXCELLENT
	Color Grade	E	61.6%			EXCELLENT
	Clarity Grade		57%			NONE
	Cut Grade					
	Depth					
	Table					
	Girdle					
	Culet					
	Polish					
	Symmetry					
	Fluorescence					

**Comments:**  
This Laboratory Grown Diamond was  
created by Chemical Vapor Deposition  
(CVD) growth process.