



**ELECTRONIC COPY**

LG746517239  
Report verification at igi.org



December 31, 2025

IGI Report Number **LG746517239**

Description **LABORATORY GROWN DIAMOND**

Shape and Cutting Style **PRINCESS CUT**

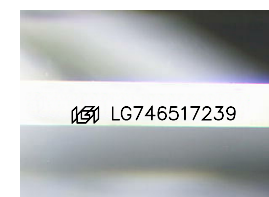
Measurements **6.31 X 6.27 X 4.36 MM**

**GRADING RESULTS**

Carat Weight **1.53 CARAT**

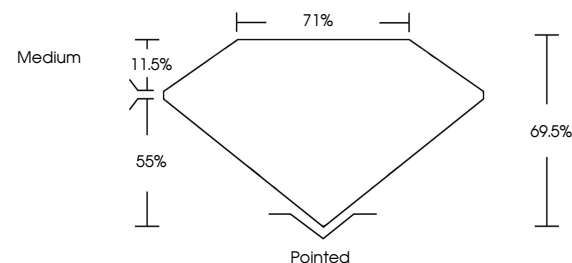
Color Grade **D**

Clarity Grade **VVS 2**

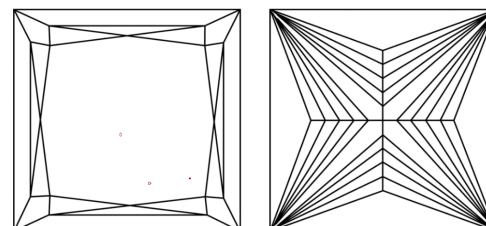


Sample Image Used

**PROPORTIONS**



**CLARITY CHARACTERISTICS**



**KEY TO SYMBOLS**

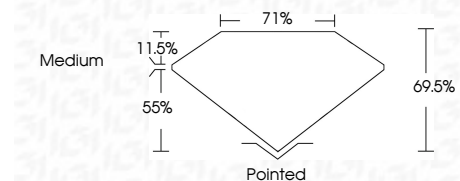
Red symbols indicate internal characteristics.  
Green symbols indicate external characteristics.

**COLOR**

D E F G H I J Faint Very Light Light

**CLARITY**

FL	IF	VVS <sup>1-2</sup>	VS <sup>1-2</sup>	SI <sup>1-2</sup>	I <sup>1-3</sup>
Flawless	Internally Flawless	Very Very Slightly Included	Very Slightly Included	Slightly Included	Included



**ADDITIONAL GRADING INFORMATION**

Polish **EXCELLENT**

Symmetry **EXCELLENT**

Fluorescence **NONE**

Inscription(s) **IGI LG746517239**

Comments: This Laboratory Grown Diamond was created by Chemical Vapor Deposition (CVD) growth process.  
Type IIa



December 31, 2025  
IGI Report No LG746517239  
**PRINCESS CUT**

1.53 CARAT  
D

6.31 X 6.27 X 4.36 MM  
69.5%  
71%  
Medium

Pointed  
EXCELLENT  
EXCELLENT  
NONE  
IGI LG746517239

Comments: This Laboratory Grown Diamond was created by Chemical Vapor Deposition (CVD) growth process.  
Type IIa