



ELECTRONIC COPY

LG746516847
Report verification at igi.org



December 22, 2025

IGI Report Number **LG746516847**

Description **LABORATORY GROWN DIAMOND**

Shape and Cutting Style **ROUND BRILLIANT**

Measurements **8.21 - 8.24 X 4.94 MM**

GRADING RESULTS

Carat Weight **2.04 CARATS**

Color Grade **FANCY VIVID GREEN**

Clarity Grade **VVS 2**

Cut Grade **IDEAL**

December 22, 2025
IGI Report Number **LG746516847**
Description **LABORATORY GROWN DIAMOND**
Shape and Cutting Style **ROUND BRILLIANT**
Measurements **8.21 - 8.24 X 4.94 MM**

GRADING RESULTS

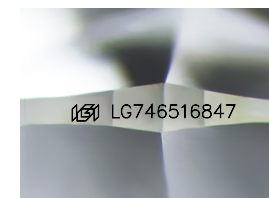
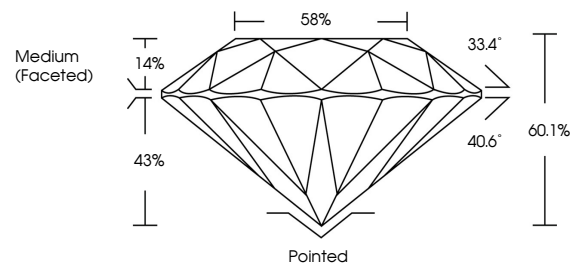
Carat Weight **2.04 CARATS**
Color Grade **FANCY VIVID GREEN**
Clarity Grade **VVS 2**
Cut Grade **IDEAL**

ADDITIONAL GRADING INFORMATION

Polish **EXCELLENT**
Symmetry **EXCELLENT**
Fluorescence **NONE**
Inscription(s) **IGI LG746516847**

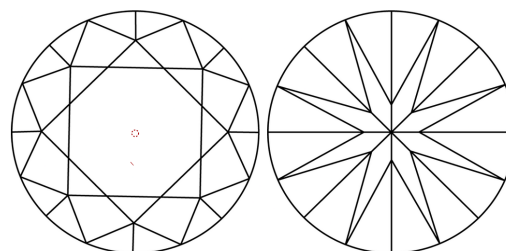
Comments: This Laboratory Grown Diamond was created by High Pressure High Temperature (HPHT) growth process. Indications of post-growth treatment.

PROPORTIONS



Sample Image Used

CLARITY CHARACTERISTICS



KEY TO SYMBOLS

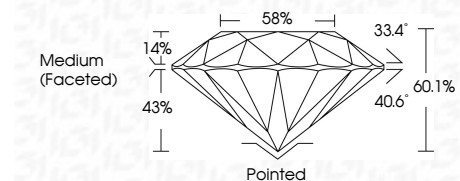
Red symbols indicate internal characteristics.
Green symbols indicate external characteristics.

COLOR

D E F G H I J Faint Very Light Light

CLARITY

FL	IF	VVS ¹⁻²	VS ¹⁻²	SI ¹⁻²	I ¹⁻³
Flawless	Internally Flawless	Very Very Slightly Included	Very Slightly Included	Slightly Included	Included



ADDITIONAL GRADING INFORMATION

Polish **EXCELLENT**
Symmetry **EXCELLENT**
Fluorescence **NONE**
Inscription(s) **IGI LG746516847**
Comments: This Laboratory Grown Diamond was created by High Pressure High Temperature (HPHT) growth process. Indications of post-growth treatment.



December 22, 2025	IGI Report No LG746516847	ROUND BRILLIANT	8.21 - 8.24 X 4.94 MM	2.04 CARATS	FANCY VIVID GREEN	VVS 2	IDEAL	60.1%	88%	Medium (Faceted)	Pointed	EXCELLENT	EXCELLENT	NONE	IGI LG746516847
<p>Comments: This Laboratory Grown Diamond was created by High Pressure High Temperature (HPHT) growth process. Indications of post-growth treatment.</p>															