



ELECTRONIC COPY

LG746516618
Report verification at igi.org



January 20, 2026
IGI Report Number **LG746516618**
Description **LABORATORY GROWN DIAMOND**
Shape and Cutting Style **PEAR MIXED CUT**
Measurements **16.70 X 10.12 X 2.82 MM**
GRADING RESULTS
Carat Weight **4.40 CARATS**
Color Grade **FANCY PINKISH ORANGE**
Clarity Grade **VS 1**

LABORATORY GROWN DIAMOND REPORT

January 20, 2026
IGI Report Number **LG746516618**
Description **LABORATORY GROWN DIAMOND**
Shape and Cutting Style **PEAR MIXED CUT**
Measurements **16.70 X 10.12 X 2.82 MM**

GRADING RESULTS

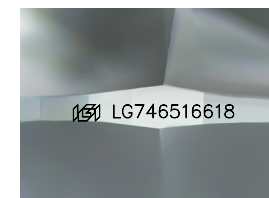
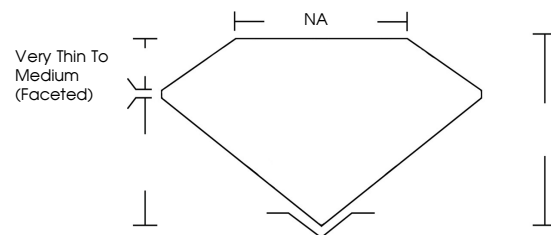
Carat Weight **4.40 CARATS**
Color Grade **FANCY PINKISH ORANGE**
Clarity Grade **VS 1**

ADDITIONAL GRADING INFORMATION

Polish **VERY GOOD**
Symmetry **EXCELLENT**
Fluorescence **SLIGHT**
Inscription(s) **IGI LG746516618**

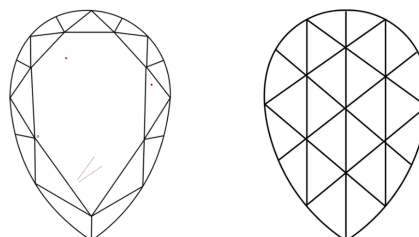
Comments: This Laboratory Grown Diamond was created by Chemical Vapor Deposition (CVD) growth process.
Indications of post-growth treatment.

PROPORTIONS



Sample Image Used

CLARITY CHARACTERISTICS



KEY TO SYMBOLS

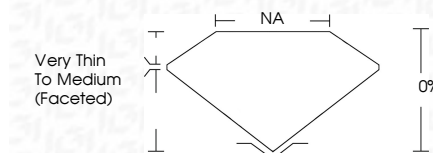
Red symbols indicate internal characteristics.
Green symbols indicate external characteristics.

COLOR

D E F G H I J Faint Very Light Light

CLARITY

FL	IF	VS ¹⁻²	VS ¹⁻²	SI ¹⁻²	I ¹⁻³
Flawless	Internally Flawless	Very Very Slightly Included	Very Slightly Included	Slightly Included	Included



ADDITIONAL GRADING INFORMATION

Polish **VERY GOOD**
Symmetry **EXCELLENT**
Fluorescence **SLIGHT**
Inscription(s) **IGI LG746516618**
Comments: This Laboratory Grown Diamond was created by Chemical Vapor Deposition (CVD) growth process.
Indications of post-growth treatment.



January 20, 2026
IGI Report No LG746516618
PEAR MIXED CUT
16.70 X 10.12 X 2.82 MM
Carat Weight **4.40 CARATS**
Color Grade **FANCY PINKISH ORANGE**
Clarity Grade **VS 1**
Depth **0%**
Table **NA**
Girdle **Very Thin To Medium (Faceted)**
Culet **VERY GOOD**
Polish **EXCELLENT**
Symmetry **EXCELLENT**
Fluorescence **SLIGHT**
Inscription(s) **IGI LG746516618**
Comments: This Laboratory Grown Diamond was created by Chemical Vapor Deposition (CVD) growth process.
Indications of post-growth treatment.