



ELECTRONIC COPY

LG746515615
Report verification at igi.org



December 18, 2025
IGI Report Number **LG746515615**
Description **LABORATORY GROWN DIAMOND**
Shape and Cutting Style **SQUARE CUSHION MODIFIED BRILLIANT**
Measurements **7.58 X 7.20 X 4.64 MM**
GRADING RESULTS
Carat Weight **2.20 CARATS**
Color Grade **FANCY VIVID GREEN**
Clarity Grade **VVS 1**

LABORATORY GROWN DIAMOND REPORT

December 18, 2025
IGI Report Number **LG746515615**
Description **LABORATORY GROWN DIAMOND**
Shape and Cutting Style **SQUARE CUSHION MODIFIED BRILLIANT**
Measurements **7.58 X 7.20 X 4.64 MM**

GRADING RESULTS

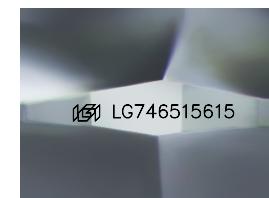
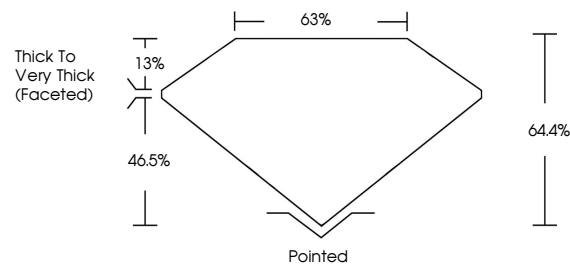
Carat Weight **2.20 CARATS**
Color Grade **FANCY VIVID GREEN**
Clarity Grade **VVS 1**

ADDITIONAL GRADING INFORMATION

Polish **EXCELLENT**
Symmetry **VERY GOOD**
Fluorescence **NONE**
Inscription(s) **IGI LG746515615**

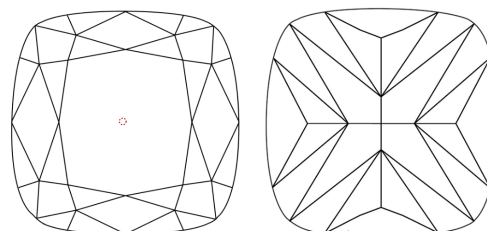
Comments: This Laboratory Grown Diamond was created by High Pressure High Temperature (HPHT) growth process. Indications of post-growth treatment.

PROPORTIONS



Sample Image Used

CLARITY CHARACTERISTICS



KEY TO SYMBOLS

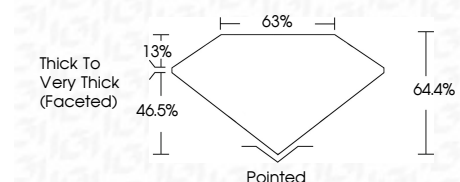
Red symbols indicate internal characteristics.
Green symbols indicate external characteristics.

COLOR

D E F G H I J Faint Very Light Light

CLARITY

FL	IF	VVS ¹⁻²	VS ¹⁻²	SI ¹⁻²	I ¹⁻³
Flawless	Internally Flawless	Very Very Slightly Included	Very Slightly Included	Slightly Included	Included



ADDITIONAL GRADING INFORMATION

Polish **EXCELLENT**
Symmetry **VERY GOOD**
Fluorescence **NONE**
Inscription(s) **IGI LG746515615**
Comments: This Laboratory Grown Diamond was created by High Pressure High Temperature (HPHT) growth process. Indications of post-growth treatment.



December 18, 2025
IGI Report No. LG746515615
SQUARE CUSHION MODIFIED BRILLIANT
7.58 X 7.20 X 4.64 MM
2.20 CARATS
FANCY VIVID GREEN
VVS 1
64.4%
63%
Thick to Very Thick (Faceted)
Pointed
EXCELLENT
VERY GOOD
NONE
IGI LG746515615
Comments: This Laboratory Grown Diamond was created by High Pressure High Temperature (HPHT) growth process. Indications of post-growth treatment.