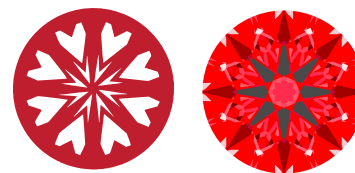




Light Performance Grade: Exceptional

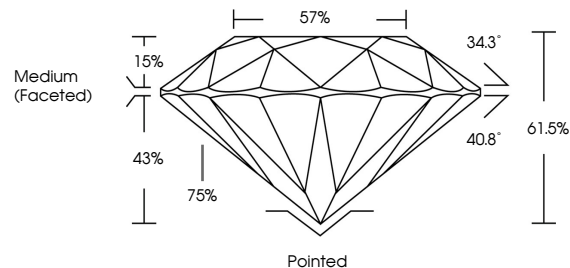


Structured Light Environment Representation

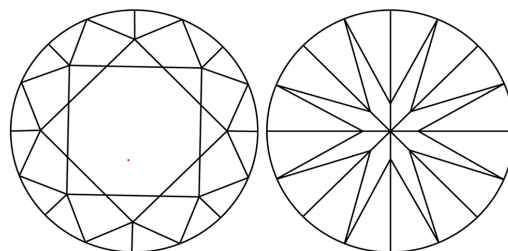


CLARITY table with categories: FL, IF, VS 1-2, VS 1-2, SI 1-2, I 1-3 and corresponding descriptions: Flawless, Internally Flawless, Very Very Slightly Included, Very Slightly Included, Slightly Included, Included.

PROPORTIONS

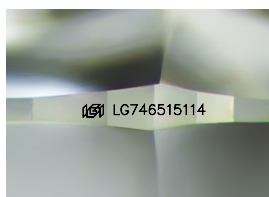


CLARITY CHARACTERISTICS



KEY TO SYMBOLS

Red symbols indicate internal characteristics.
Green symbols indicate external characteristics.



Sample Image Used

ELECTRONIC COPY

LABORATORY GROWN DIAMOND REPORT

January 20, 2026
IGI Report Number: LG746515114
Description: LABORATORY GROWN DIAMOND
Shape and Cutting Style: ROUND BRILLIANT
Measurements: 8.73 - 8.76 x 5.38 mm

GRADING RESULTS

Carat Weight: 2.53 CARATS
Color Grade: D
Clarity Grade: VVS 2
Cut Grade: IDEAL

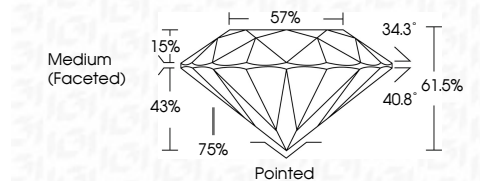
ADDITIONAL GRADING INFORMATION

Polish: EXCELLENT
Symmetry: EXCELLENT
Fluorescence: NONE
Inscription(s): IGI LG746515114

Comments: HEARTS & ARROWS
This Laboratory Grown Diamond was created by Chemical Vapor Deposition (CVD) growth process. Type IIa



January 20, 2026
IGI Report Number: LG746515114
Description: LABORATORY GROWN DIAMOND
Shape and Cutting Style: ROUND BRILLIANT
Measurements: 8.73 - 8.76 X 5.38 MM
GRADING RESULTS
Carat Weight: 2.53 CARATS
Color Grade: D
Clarity Grade: VVS 2
Cut Grade: IDEAL



ADDITIONAL GRADING INFORMATION
Polish: EXCELLENT
Symmetry: EXCELLENT
Fluorescence: NONE
Inscription(s): IGI LG746515114
Comments: HEARTS & ARROWS
This Laboratory Grown Diamond was created by Chemical Vapor Deposition (CVD) growth process. Type IIa



Summary table of report details: January 20, 2026, IGI Report No LG746515114, ROUND BRILLIANT, 8.73 - 8.76 X 5.38 MM, 2.53 CARATS, D, VVS 2, IDEAL, 61.5%, 57%, Medium (Faceted), Pointed, EXCELLENT, EXCELLENT, NONE, IGI LG746515114.



Comments: HEARTS & ARROWS
This Laboratory Grown Diamond was created by Chemical Vapor Deposition (CVD) growth process. Type IIa