



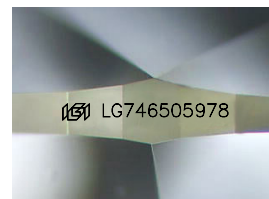
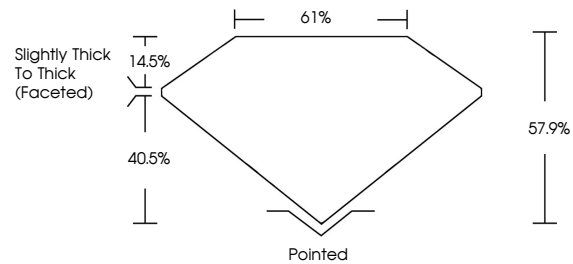
**INTERNATIONAL
GEMOLOGICAL
INSTITUTE**

ELECTRONIC COPY

LABORATORY GROWN DIAMOND REPORT

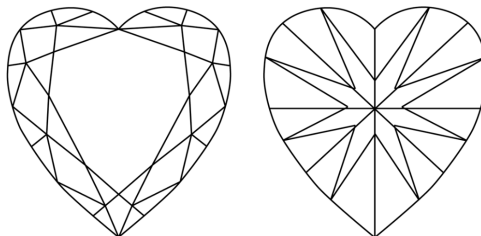
LG746505978
Report verification at igi.org

PROPORTIONS



Sample Image Used

CLARITY CHARACTERISTICS



KEY TO SYMBOLS

Red symbols indicate internal characteristics.
Green symbols indicate external characteristics.

COLOR

D E F G H I J Faint Very Light Light

CLARITY

FL	IF	VVS ¹⁻²	VS ¹⁻²	SI ¹⁻²	I ¹⁻³
Flawless	Internally Flawless	Very Very Slightly Included	Very Slightly Included	Slightly Included	Included



November 10, 2025

IGI Report Number **LG746505978**

Description	LABORATORY GROWN DIAMOND
-------------	--------------------------

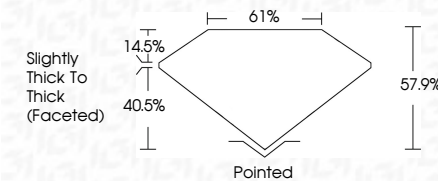
Shape and Cutting Style **HEART BRILLIANT**

Measurements **8.85 X 10.10 X 5.85 MM**

GRADING RESULTS

Carat Weight **3.03 CARATS**

Color Grade **D**

Clarity Grade VVS 2

ADDITIONAL GRADING INFORMATION

Polish **EXCELLENT**Symmetry **EXCELLENT**Fluorescence **NONE**Inscription(s) LG746505970

Comments: Plot not shown.
This Laboratory Grown Diamond was created by
Chemical Vapor Deposition (CVD) growth process.
Type IIa



IG



© IGI 2020, International Gemological Institute

FD - 10 20



THIS DOCUMENT WAS PRODUCED WITH THE FOLLOWING SECURITY MEASURES: SPECIAL DOCUMENT PAPER, INK SCREENS, WATERMARK, BACKGROUND DESIGNS, HOLOGRAM AND OTHER SECURITY FEATURES NOT LISTED AND DO EXCEED DOCUMENT SECURITY INDUSTRY GUIDELINES

November 10, 2025
IGI Report No LG746505978
HEART BRILLIANT

18.95 X 10.10 X 5.85 MM	Carat Weight	3.03 CARATS
	Color Grade	D
	Clarity Grade	VVS 2
	Depth	67.9%
	Table	61%
	Girdle	Slightly Thick To Thick (girdled)
	Culet	Pointed
	Polish	EXCELLENT
	Symmetry	EXCELLENT
	Fluorescence	NONE
	Annotations(s)	see 11 6746459578

Comments:
Plot not shown.
This Laboratory Grown Diamond was
created by Chemical Vapor Deposition
(CVD) growth process.
Type IIa

www.igi.org