



**INTERNATIONAL  
GEMOLOGICAL  
INSTITUTE**

**ELECTRONIC COPY**



November 6, 2025

**IGI Report Number** LG746501139  
**ROUND BRILLIANT**  
**LABORATORY GROWN DIAMOND**  
**6.24 - 6.31 X 3.83 MM**

**Carat Weight** 0.91 CARAT  
**Color Grade** FANCY INTENSE PINK  
**Clarity Grade** SI 1  
**Cut Grade** IDEAL  
**Polish** VERY GOOD  
**Symmetry** VERY GOOD  
**Fluorescence** STRONG  
**Inscription(s)** IGI LG746501139

Comments: This Laboratory Grown Diamond was created by Chemical Vapor Deposition (CVD) growth process. Indications of post-growth treatment.

**LABORATORY GROWN DIAMOND REPORT**

November 6, 2025  
IGI Report Number **LG746501139**  
Description **LABORATORY GROWN DIAMOND**  
Shape and Cutting Style **ROUND BRILLIANT**  
Measurements **6.24 - 6.31 X 3.83 MM**

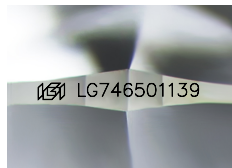
**GRADING RESULTS**

**Carat Weight** 0.91 CARAT  
**Color Grade** FANCY INTENSE PINK  
**Clarity Grade** SI 1  
**Cut Grade** IDEAL

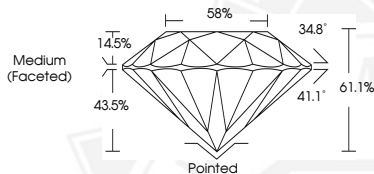
**ADDITIONAL GRADING INFORMATION**

**Polish** VERY GOOD  
**Symmetry** VERY GOOD  
**Fluorescence** STRONG  
**Inscription(s)** IGI LG746501139

Comments: This Laboratory Grown Diamond was created by Chemical Vapor Deposition (CVD) growth process. Indications of post-growth treatment.



Sample Image Used



November 6, 2025

**IGI Report Number** LG746501139  
**ROUND BRILLIANT**  
**LABORATORY GROWN DIAMOND**  
**6.24 - 6.31 X 3.83 MM**

**Carat Weight** 0.91 CARAT  
**Color Grade** FANCY INTENSE PINK  
**Clarity Grade** SI 1  
**Cut Grade** IDEAL  
**Polish** VERY GOOD  
**Symmetry** VERY GOOD  
**Fluorescence** STRONG  
**Inscription(s)** IGI LG746501139

Comments: This Laboratory Grown Diamond was created by Chemical Vapor Deposition (CVD) growth process. Indications of post-growth treatment.



THIS DOCUMENT WAS PRODUCED WITH THE FOLLOWING SECURITY MEASURES: SPECIAL DOCUMENT PAPER, INK SCREENS, WATERMARK, BACKGROUND DESIGNS, HOLOGRAM AND OTHER SECURITY FEATURES NOT LISTED AND DO EXCEED DOCUMENT SECURITY INDUSTRY GUIDELINES.

For terms & conditions and to verify this report, please visit [www.igi.org](http://www.igi.org)