



**INTERNATIONAL  
GEMOLOGICAL  
INSTITUTE**

**ELECTRONIC COPY**

LG745526551  
Report verification at [igi.org](https://igi.org)

LABORATORY GROWN DIAMOND REPORT



October 28, 2025

IGI Report Number **LG745526551**

Description	LABORATORY GROWN DIAMOND
-------------	--------------------------

Shape and Cutting Style **CUSHION MODIFIED  
BRILLIANT**

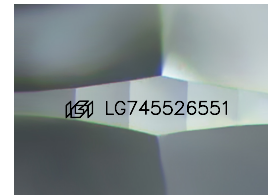
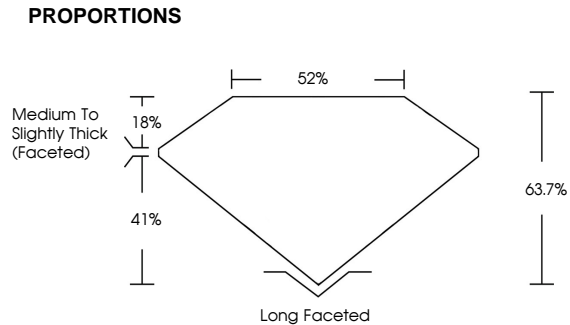
Measurements	10.54 X 8.02 X 5.11 MM
--------------	------------------------

## GRADING RESULTS

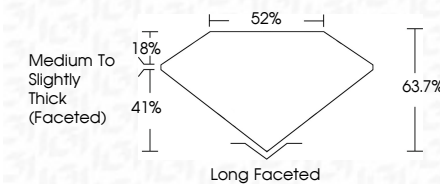
Carat Weight **3.25 CARATS**

Color Grade	E
-------------	---

Clarity Grade **INTERNALLY FLAWLESS**



Sample Image Used



## COLOR

D E F G H I J Faint Very Light Light

## CLARITY

FL IF WS<sup>1-2</sup> VS<sup>1-2</sup> SI<sup>1-2</sup> I<sup>1-3</sup>

Flawless	Internally Flawless	Very Slightly Included	Very Slightly Included	Slightly Included	Included
----------	---------------------	------------------------	------------------------	-------------------	----------



© IGI 2020, International Gemological Institute

FD - 10 20



IG

October 28, 2025	Carat Weight	3.25 CARATS
GI Report No LG7455026551	Color Grade	E
CUSHION MODIFIED BRILLIANT	Clarity Grade	IF
10.54 X 8.02 X 5.11 MM	Depth	63.7%
	Table	62%
	Girdle	Medium to slightly thick (faced)
	Culet	Long Faceted
	Polish	EXCELLENT
	Symmetry	EXCELLENT
	Fluorescence	NONE
	Inscriptions	489 LG7455026551

**Comments:**  
This Laboratory Grown Diamond was created by Chemical Vapor Deposition (CVD) growth process.

**www.igi.org**

THIS DOCUMENT WAS PRODUCED WITH THE FOLLOWING SECURITY MEASURES: SPECIAL DOCUMENT PAPER, INK SCREENS, WATERMARK, BACKGROUND DESIGNS, HOLOGRAM AND OTHER SECURITY FEATURES NOT LISTED AND DO EXCEED DOCUMENT SECURITY INDUSTRY GUIDELINES