



ELECTRONIC COPY

LG745523882
Report verification at igi.org



November 6, 2025
IGI Report Number **LG745523882**
Description **LABORATORY GROWN DIAMOND**
Shape and Cutting Style **ROUND BRILLIANT**
Measurements **10.73 - 10.80 X 6.28 MM**
GRADING RESULTS
Carat Weight **4.50 CARATS**
Color Grade **F**
Clarity Grade **VS 1**
Cut Grade **EXCELLENT**

November 6, 2025
IGI Report Number **LG745523882**
Description **LABORATORY GROWN DIAMOND**
Shape and Cutting Style **ROUND BRILLIANT**
Measurements **10.73 - 10.80 X 6.28 MM**

GRADING RESULTS

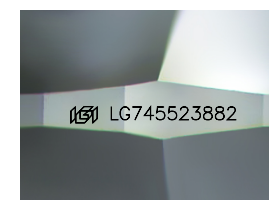
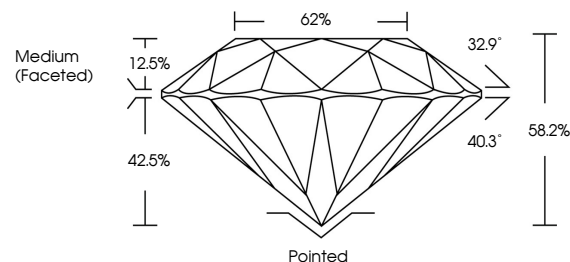
Carat Weight **4.50 CARATS**
Color Grade **F**
Clarity Grade **VS 1**
Cut Grade **EXCELLENT**

ADDITIONAL GRADING INFORMATION

Polish **EXCELLENT**
Symmetry **EXCELLENT**
Fluorescence **NONE**
Inscription(s) **LG745523882**

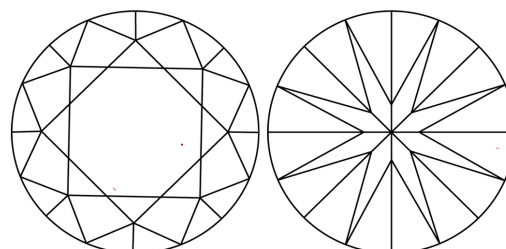
Comments: This Laboratory Grown Diamond was created by Chemical Vapor Deposition (CVD) growth process.
Type IIa

PROPORTIONS



Sample Image Used

CLARITY CHARACTERISTICS



KEY TO SYMBOLS

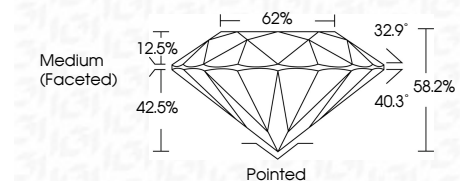
Red symbols indicate internal characteristics.
Green symbols indicate external characteristics.

COLOR

D E F G H I J Faint Very Light Light

CLARITY

FL	IF	VS ¹⁻²	VS ¹⁻²	SI ¹⁻²	I ¹⁻³
Flawless	Internally Flawless	Very Very Slightly Included	Very Slightly Included	Slightly Included	Included



ADDITIONAL GRADING INFORMATION

Polish **EXCELLENT**
Symmetry **EXCELLENT**
Fluorescence **NONE**
Inscription(s) **LG745523882**
Comments: This Laboratory Grown Diamond was created by Chemical Vapor Deposition (CVD) growth process.
Type IIa



November 6, 2025
IGI Report No **LG745523882**
ROUND BRILLIANT
10.73 - 10.80 X 6.28 MM
Carat Weight **4.50 CARATS**
Color Grade **F**
Clarity Grade **VS 1**
Cut Grade **EXCELLENT**
Depth **58.2%**
Table **62%**
Girdle **Medium (Faceted)**
Culet **Pointed**
Polish **EXCELLENT**
Symmetry **EXCELLENT**
Fluorescence **NONE**
Inscription(s) **IGI LG745523882**
Comments: This Laboratory Grown Diamond was created by Chemical Vapor Deposition (CVD) growth process.
Type IIa