



ELECTRONIC COPY

LG745523788
Report verification at igi.org



November 6, 2025
IGI Report Number **LG745523788**
Description **LABORATORY GROWN DIAMOND**
Shape and Cutting Style **ROUND BRILLIANT**
Measurements **11.02 - 11.09 X 6.68 MM**
GRADING RESULTS
Carat Weight **5.02 CARATS**
Color Grade **FANCY PINK**
Clarity Grade **VS 1**
Cut Grade **EXCELLENT**

November 6, 2025
IGI Report Number **LG745523788**
Description **LABORATORY GROWN DIAMOND**
Shape and Cutting Style **ROUND BRILLIANT**
Measurements **11.02 - 11.09 X 6.68 MM**

GRADING RESULTS

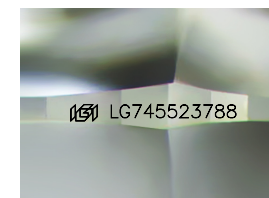
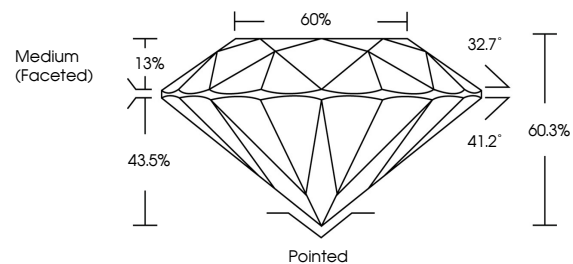
Carat Weight **5.02 CARATS**
Color Grade **FANCY PINK**
Clarity Grade **VS 1**
Cut Grade **EXCELLENT**

ADDITIONAL GRADING INFORMATION

Polish **EXCELLENT**
Symmetry **EXCELLENT**
Fluorescence **STRONG**
Inscription(s) **LG745523788**

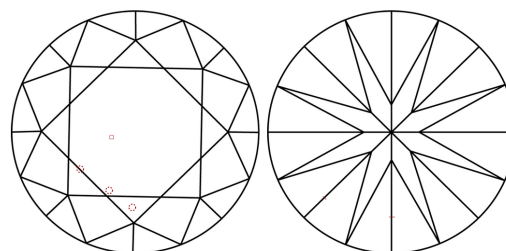
Comments: This Laboratory Grown Diamond was created by Chemical Vapor Deposition (CVD) growth process.
Indications of post-growth treatment.

PROPORTIONS



Sample Image Used

CLARITY CHARACTERISTICS



KEY TO SYMBOLS

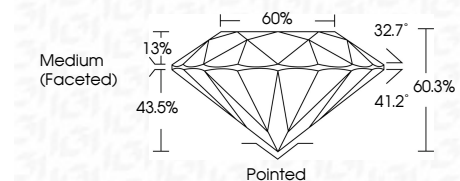
Red symbols indicate internal characteristics.
Green symbols indicate external characteristics.

COLOR

D E F G H I J Faint Very Light Light

CLARITY

FL	IF	VS ¹⁻²	VS ¹⁻²	SI ¹⁻²	I ¹⁻³
Flawless	Internally Flawless	Very Very Slightly Included	Very Slightly Included	Slightly Included	Included



ADDITIONAL GRADING INFORMATION

Polish **EXCELLENT**
Symmetry **EXCELLENT**
Fluorescence **STRONG**
Inscription(s) **LG745523788**
Comments: This Laboratory Grown Diamond was created by Chemical Vapor Deposition (CVD) growth process.
Indications of post-growth treatment.



November 6, 2025
IGI Report No **LG745523788**
ROUND BRILLIANT
5.02 CARATS
Carat Weight
FANCY PINK
Color Grade
VS 1
Clarity Grade
EXCELLENT
Depth
60.3%
Table
60%
Girdle
Medium (Faceted)
Culet
Pointed
Polish
EXCELLENT
Symmetry
EXCELLENT
Fluorescence
STRONG
Inscription(s)
 LG745523788
Comments: This Laboratory Grown Diamond was created by Chemical Vapor Deposition (CVD) growth process.
Indications of post-growth treatment.