



ELECTRONIC COPY

LG745523627
Report verification at igi.org



November 13, 2025
IGI Report Number **LG745523627**
Description **LABORATORY GROWN DIAMOND**
Shape and Cutting Style **SQUARE CUSHION MODIFIED BRILLIANT**
Measurements **8.81 X 8.68 X 5.83 MM**
GRADING RESULTS
Carat Weight **4.20 CARATS**
Color Grade **FANCY VIVID GREEN BLUE**
Clarity Grade **VS 1**

LABORATORY GROWN DIAMOND REPORT

November 13, 2025
IGI Report Number **LG745523627**
Description **LABORATORY GROWN DIAMOND**
Shape and Cutting Style **SQUARE CUSHION MODIFIED BRILLIANT**
Measurements **8.81 X 8.68 X 5.83 MM**

GRADING RESULTS

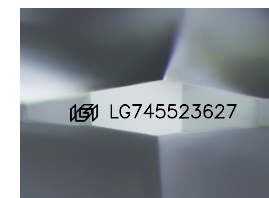
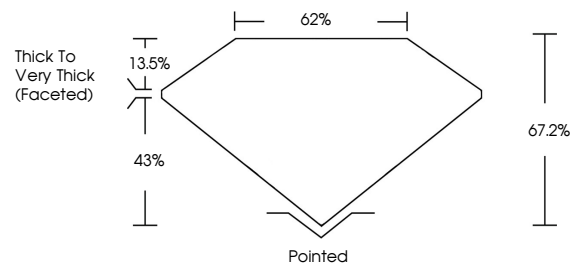
Carat Weight **4.20 CARATS**
Color Grade **FANCY VIVID GREEN BLUE**
Clarity Grade **VS 1**

ADDITIONAL GRADING INFORMATION

Polish **EXCELLENT**
Symmetry **EXCELLENT**
Fluorescence **NONE**
Inscription(s) **(IGI) LG745523627**

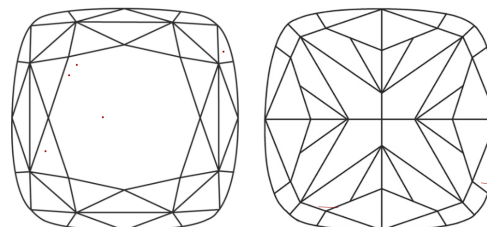
Comments: This Laboratory Grown Diamond was created by Chemical Vapor Deposition (CVD) growth process. Indications of post-growth treatment.

PROPORTIONS



Sample Image Used

CLARITY CHARACTERISTICS



KEY TO SYMBOLS

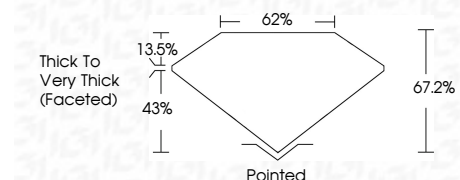
Red symbols indicate internal characteristics.
Green symbols indicate external characteristics.

COLOR

D E F G H I J Faint Very Light Light

CLARITY

FL	IF	VS ¹⁻²	VS ¹⁻²	SI ¹⁻²	I ¹⁻³
Flawless	Internally Flawless	Very Very Slightly Included	Very Slightly Included	Slightly Included	Included



ADDITIONAL GRADING INFORMATION

Polish **EXCELLENT**
Symmetry **EXCELLENT**
Fluorescence **NONE**
Inscription(s) **(IGI) LG745523627**
Comments: This Laboratory Grown Diamond was created by Chemical Vapor Deposition (CVD) growth process. Indications of post-growth treatment.



November 13, 2025
IGI Report No **LG745523627**
SQUARE CUSHION MODIFIED BRILLIANT
4.20 CARATS
Carat Weight **FANCY VIVID GREEN BLUE**
Color Grade **VS 1**
Clarity Grade **VS 1**
Depth **67.2%**
Table **62%**
Girdle
Culet **Pointed**
Polish **EXCELLENT**
Symmetry **EXCELLENT**
Fluorescence **NONE**
Inscription(s) **(IGI) LG745523627**
Comments: This Laboratory Grown Diamond was created by Chemical Vapor Deposition (CVD) growth process. Indications of post-growth treatment.