



**ELECTRONIC COPY**

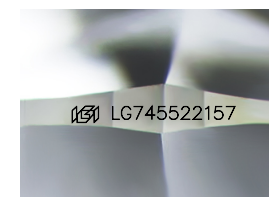
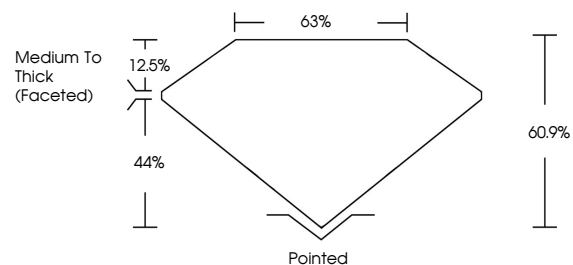
LG745522157  
Report verification at igi.org



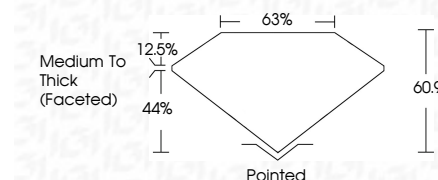
November 4, 2025  
IGI Report Number **LG745522157**  
Description **LABORATORY GROWN DIAMOND**  
Shape and Cutting Style **SQUARE CUSHION MODIFIED BRILLIANT**  
Measurements **5.75 X 5.76 X 3.51 MM**  
**GRADING RESULTS**  
Carat Weight **1.04 CARAT**  
Color Grade **FANCY YELLOW**  
Clarity Grade **VVS 2**

November 4, 2025  
IGI Report Number **LG745522157**  
Description **LABORATORY GROWN DIAMOND**  
Shape and Cutting Style **SQUARE CUSHION MODIFIED BRILLIANT**  
Measurements **5.75 X 5.76 X 3.51 MM**  
**GRADING RESULTS**  
Carat Weight **1.04 CARAT**  
Color Grade **FANCY YELLOW**  
Clarity Grade **VVS 2**

**PROPORTIONS**



Sample Image Used



**ADDITIONAL GRADING INFORMATION**

Polish **EXCELLENT**  
Symmetry **EXCELLENT**  
Fluorescence **NONE**  
Inscription(s) **IGI LG745522157**

Comments: This Laboratory Grown Diamond was created by Chemical Vapor Deposition (CVD) growth process.

**COLOR**

D E F G H I J Faint Very Light Light

**CLARITY**

FL	IF	VVS <sup>1-2</sup>	VS <sup>1-2</sup>	SI <sup>1-2</sup>	I <sup>1-3</sup>
Flawless	Internally Flawless	Very Very Slightly Included	Very Slightly Included	Slightly Included	Included

**ADDITIONAL GRADING INFORMATION**

Polish **EXCELLENT**  
Symmetry **EXCELLENT**  
Fluorescence **NONE**  
Inscription(s) **IGI LG745522157**  
Comments: This Laboratory Grown Diamond was created by Chemical Vapor Deposition (CVD) growth process.



**IGI**



November 4, 2025  
IGI Report No **LG745522157**  
**SQUARE CUSHION MODIFIED BRILLIANT**  
**1.04 CARAT**  
Carat Weight  
**FANCY YELLOW**  
Color Grade  
**VVS 2**  
Clarity Grade  
**60.9%**  
Table  
**63%**  
Girdle  
**Medium To Thick (Faceted)**  
Culet  
**Pointed**  
Polish  
**EXCELLENT**  
Symmetry  
**EXCELLENT**  
Fluorescence  
**NONE**  
Inscription(s)  
**IGI LG745522157**  
Comments: This Laboratory Grown Diamond was created by Chemical Vapor Deposition (CVD) growth process.