



**ELECTRONIC COPY**

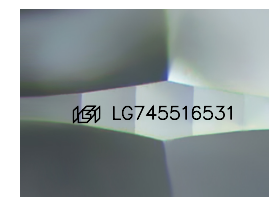
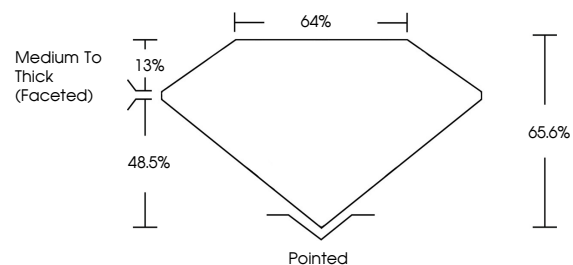
LG745516531  
Report verification at [igi.org](http://igi.org)



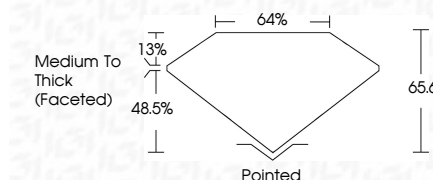
November 15, 2025  
IGI Report Number **LG745516531**  
Description **LABORATORY GROWN DIAMOND**  
Shape and Cutting Style **SQUARE CUSHION MODIFIED BRILLIANT**  
Measurements **8.85 X 8.61 X 5.65 MM**  
**GRADING RESULTS**  
Carat Weight **3.30 CARATS**  
Color Grade **F**  
Clarity Grade **VS 2**

November 15, 2025  
IGI Report Number **LG745516531**  
Description **LABORATORY GROWN DIAMOND**  
Shape and Cutting Style **SQUARE CUSHION MODIFIED BRILLIANT**  
Measurements **8.85 X 8.61 X 5.65 MM**  
**GRADING RESULTS**  
Carat Weight **3.30 CARATS**  
Color Grade **F**  
Clarity Grade **VS 2**

**PROPORTIONS**



Sample Image Used



**ADDITIONAL GRADING INFORMATION**

Polish **EXCELLENT**  
Symmetry **EXCELLENT**  
Fluorescence **NONE**  
Inscription(s) **IGI LG745516531**

Comments: This Laboratory Grown Diamond was created by Chemical Vapor Deposition (CVD) growth process.  
Type IIa

**ADDITIONAL GRADING INFORMATION**

Polish **EXCELLENT**  
Symmetry **EXCELLENT**  
Fluorescence **NONE**  
Inscription(s) **IGI LG745516531**  
Comments: This Laboratory Grown Diamond was created by Chemical Vapor Deposition (CVD) growth process.  
Type IIa

**COLOR**

D E F G H I J Faint Very Light Light

**CLARITY**

FL	IF	VS <sup>1-2</sup>	VS <sup>1-2</sup>	SI <sup>1-2</sup>	I <sup>1-3</sup>
Flawless	Internally Flawless	Very Very Slightly Included	Very Slightly Included	Slightly Included	Included



**IGI**

November 15, 2025  
IGI Report No **LG745516531**  
**SQUARE CUSHION MODIFIED BRILLIANT**  
**8.85 X 8.61 X 5.65 MM**  
Carat Weight **3.30 CARATS**  
Color Grade **F**  
Clarity Grade **VS 2**  
Depth **65.6%**  
Table **64%**  
Girdle **Medium To Thick (Faceted)**  
Culet **Pointed**  
Polish **EXCELLENT**  
Symmetry **EXCELLENT**  
Fluorescence **NONE**  
Inscription(s) **IGI LG745516531**

Comments: This Laboratory Grown Diamond was created by Chemical Vapor Deposition (CVD) growth process.  
Type IIa