



ELECTRONIC COPY

LG745508176
Report verification at igi.org



November 14, 2025

IGI Report Number **LG745508176**

Description **LABORATORY GROWN DIAMOND**

Shape and Cutting Style **ROUND BRILLIANT**

Measurements **9.25 - 9.30 X 5.75 MM**

GRADING RESULTS

Carat Weight **3.03 CARATS**

Color Grade **E**

Clarity Grade **VVS 2**

Cut Grade **IDEAL**

November 14, 2025

IGI Report Number **LG745508176**

Description **LABORATORY GROWN DIAMOND**

Shape and Cutting Style **ROUND BRILLIANT**

Measurements **9.25 - 9.30 X 5.75 MM**

GRADING RESULTS

Carat Weight **3.03 CARATS**

Color Grade **E**

Clarity Grade **VVS 2**

Cut Grade **IDEAL**

ADDITIONAL GRADING INFORMATION

Polish **EXCELLENT**

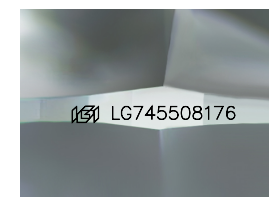
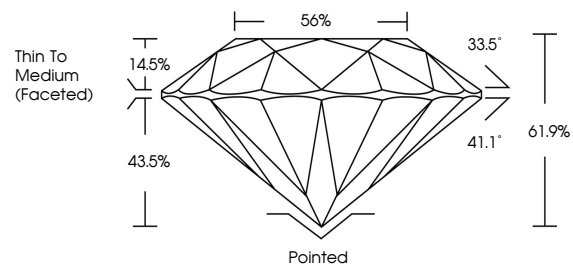
Symmetry **EXCELLENT**

Fluorescence **NONE**

Inscription(s) **LG745508176**

Comments: This Laboratory Grown Diamond was created by Chemical Vapor Deposition (CVD) growth process. Type IIa

PROPORTIONS



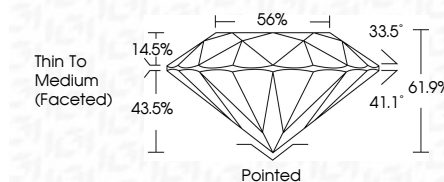
Sample Image Used

COLOR

D E F G H I J Faint Very Light Light

CLARITY

FL	IF	VVS ¹⁻²	VS ¹⁻²	SI ¹⁻²	I ¹⁻³
Flawless	Internally Flawless	Very Very Slightly Included	Very Slightly Included	Slightly Included	Included



ADDITIONAL GRADING INFORMATION

Polish **EXCELLENT**

Symmetry **EXCELLENT**

Fluorescence **NONE**

Inscription(s) **LG745508176**

Comments: This Laboratory Grown Diamond was created by Chemical Vapor Deposition (CVD) growth process. Type IIa



November 14, 2025	3.03 CARATS	E	VVS 2	IDEAL	61.9%	56%	Pointed	EXCELLENT	EXCELLENT	NONE	LG745508176
IGI Report No LG745508176	Carat Weight	Color Grade	Clarity Grade	Cut Grade	Depth	Table	Girdle	Polish	Symmetry	Fluorescence	Inscription(s)
ROUND BRILLIANT	9.25 - 9.30 X 5.75 MM						Thin To Medium (Faceted)				

Comments: This Laboratory Grown Diamond was created by Chemical Vapor Deposition (CVD) growth process. Type IIa