



**ELECTRONIC COPY**

## LABORATORY GROWN DIAMOND REPORT

LG745508142  
Report verification at [igi.org](https://igi.org)

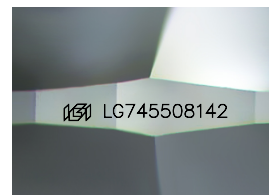
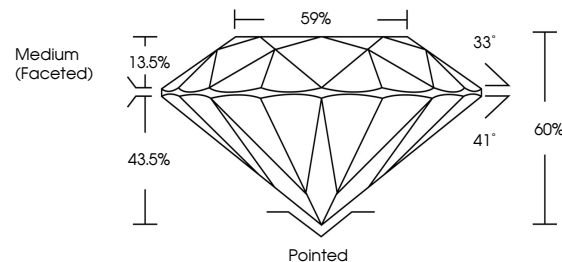
November 11, 2025	
IGI Report Number	LG745508142
Description	LABORATORY GROWN DIAMOND
Shape and Cutting Style	ROUND BRILLIANT
Measurements	9.35 - 9.41 X 5.63 MM
GRADING RESULTS	
Carat Weight	3.01 CARATS
Color Grade	D
Clarity Grade	VVS 1
Cut Grade	IDEAL

### ADDITIONAL GRADING INFORMATION

Polish	EXCELLENT
Symmetry	EXCELLENT
Fluorescence	NONE
Inscription(s)	 LG745508142

Comments: This Laboratory Grown Diamond was created by Chemical Vapor Deposition (CVD) growth process.  
Type IIa

## PROPORTIONS



Sample Image Used

## COLOR

D E F G H I J Faint Very Light Light

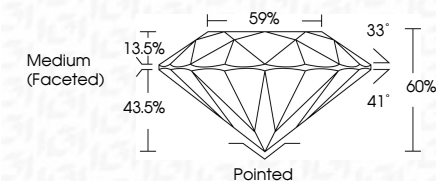
## CLARITY

FL	IF	VVS <sup>1-2</sup>	VS <sup>1-2</sup>	SI <sup>1-2</sup>	I <sup>1-3</sup>
Flawless	Internally Flawless	Very Very Slightly Included	Very Slightly Included	Slightly Included	Included

## LABORATORY GROWN DIAMOND REPORT



November 1st, 2025	
IGI Report Number	LG745508142
Description	LABORATORY GROWN DIAMOND
Shape and Cutting Style	ROUND BRILLIANT
Measurements	9.35 - 9.41 X 5.63 MM
GRADING RESULTS	
Carat Weight	3.01 CARATS
Color Grade	D
Clarity Grade	VVS 1
Cut Grade	IDEAL



### ADDITIONAL GRADING INFORMATION

Polish	EXCELLENT
Symmetry	EXCELLENT
Fluorescence	NONE
Inscription(s)	 LG745508142
<p>Comments: This Laboratory Grown Diamond was created by Chemical Vapor Deposition (CVD) growth process.</p> <p>Type IIa</p>	



© IGI 2020, International Gemological Institute

FD - 10 20



THIS DOCUMENT WAS PRODUCED WITH THE FOLLOWING SECURITY MEASURES: SPECIAL DOCUMENT PAPER, INK SCREENS, WATERMARK, BACKGROUND DESIGNS, HOLOGRAM AND OTHER SECURITY FEATURES NOT LISTED AND DO EXCEED DOCUMENT SECURITY INDUSTRY GUIDELINES

**www.igi.org**

November 11, 2025  
IGI Report No LG745508142  
ROUND BRILLIANT

9.35 - 9.41 X 5.63 MM  
3.01 CARATS

Color Grade	Clarity Grade	Weight	D
-------------	---------------	--------	---

Clarity Grade	WS 1
Cut Grade	IDEAL

Canal Closure	IDEAL
Depth	60%

Table	59%
-------	-----

Girdle

[illegible]

Culet	Pointed
Polish	EXCELLENT

**EXCELLENT**

**EXCELLENT**

**Symmetry**

Fluorescence	NONE
Fluorescence	NONE

Inscription(s)	1971 LG745508142
<p>  </p>	

Comments:

**This Laboratory Grown Diamond was created by Chemical Vapor Deposition**

**CCVD) growth process.**  
**Type IIa**

type III