



ELECTRONIC COPY

LABORATORY GROWN DIAMOND REPORT

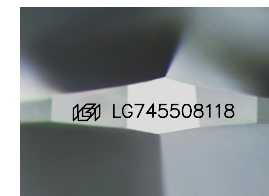
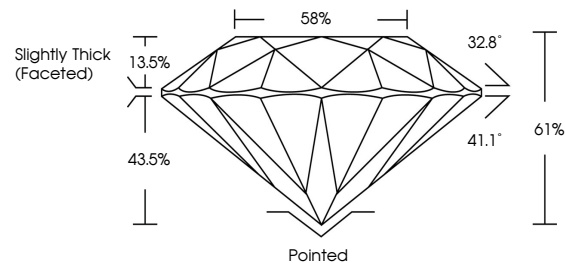
November 14, 2025
IGI Report Number LG745508118
Description LABORATORY GROWN DIAMOND
Shape and Cutting Style ROUND BRILLIANT
Measurements 9.26 - 9.32 X 5.67 MM
GRADING RESULTS
Carat Weight 3.00 CARATS
Color Grade E
Clarity Grade VVS 2
Cut Grade IDEAL

ADDITIONAL GRADING INFORMATION

Polish EXCELLENT
Symmetry EXCELLENT
Fluorescence NONE
Inscription(s) LG745508118

Comments: HEARTS & ARROWS
This Laboratory Grown Diamond was created by Chemical Vapor Deposition (CVD) growth process. Type IIa

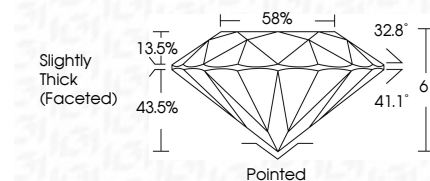
PROPORTIONS



Sample Image Used



November 14, 2025
IGI Report Number LG745508118
Description LABORATORY GROWN DIAMOND
Shape and Cutting Style ROUND BRILLIANT
Measurements 9.26 - 9.32 X 5.67 MM
GRADING RESULTS
Carat Weight 3.00 CARATS
Color Grade E
Clarity Grade VVS 2
Cut Grade IDEAL



COLOR

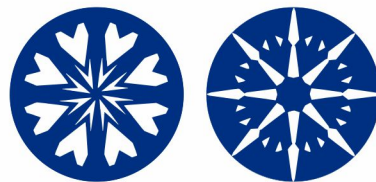
D E F G H I J Faint Very Light Light

CLARITY

FL IF VS¹⁻² VS¹⁻² SI¹⁻² I¹⁻³
Flawless Internally Flawless Very Very Slightly Included Very Slightly Included Slightly Included Included

ADDITIONAL GRADING INFORMATION

Polish EXCELLENT
Symmetry EXCELLENT
Fluorescence NONE
Inscription(s) LG745508118
Comments: HEARTS & ARROWS
This Laboratory Grown Diamond was created by Chemical Vapor Deposition (CVD) growth process. Type IIa



November 14, 2025
IGI Report No LG745508118
ROUND BRILLIANT
9.26 - 9.32 X 5.67 MM
3.00 CARATS
E
VVS 2
IDEAL
61%
58%
Slightly Thick (Faceted)
Pointed
EXCELLENT
EXCELLENT
NONE
None LG745508118
Comments: HEARTS & ARROWS
This Laboratory Grown Diamond was created by Chemical Vapor Deposition (CVD) growth process. Type IIa