



ELECTRONIC COPY

LG745508015
Report verification at igi.org



November 11, 2025

IGI Report Number **LG745508015**

Description **LABORATORY GROWN DIAMOND**

Shape and Cutting Style **ROUND BRILLIANT**

Measurements **7.98 - 8.04 X 5.04 MM**

GRADING RESULTS

Carat Weight **2.00 CARATS**

Color Grade **D**

Clarity Grade **VS 1**

Cut Grade **EXCELLENT**

November 11, 2025

IGI Report Number **LG745508015**

Description **LABORATORY GROWN DIAMOND**

Shape and Cutting Style **ROUND BRILLIANT**

Measurements **7.98 - 8.04 X 5.04 MM**

GRADING RESULTS

Carat Weight **2.00 CARATS**

Color Grade **D**

Clarity Grade **VS 1**

Cut Grade **EXCELLENT**

ADDITIONAL GRADING INFORMATION

Polish **EXCELLENT**

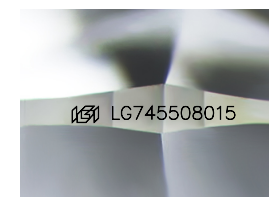
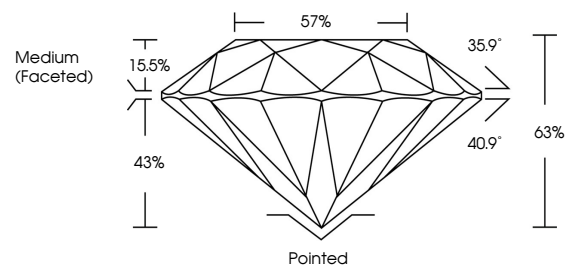
Symmetry **EXCELLENT**

Fluorescence **NONE**

Inscription(s) **LG745508015**

Comments: This Laboratory Grown Diamond was created by Chemical Vapor Deposition (CVD) growth process. Type IIa

PROPORTIONS



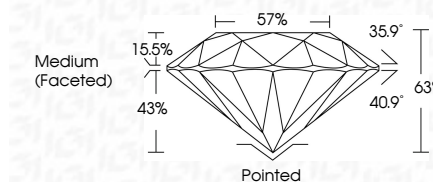
Sample Image Used

COLOR

D E F G H I J Faint Very Light Light

CLARITY

FL	IF	VS ¹⁻²	VS ¹⁻²	SI ¹⁻²	I ¹⁻³
Flawless	Internally Flawless	Very Very Slightly Included	Very Slightly Included	Slightly Included	Included



ADDITIONAL GRADING INFORMATION

Polish **EXCELLENT**

Symmetry **EXCELLENT**

Fluorescence **NONE**

Inscription(s) **LG745508015**

Comments: This Laboratory Grown Diamond was created by Chemical Vapor Deposition (CVD) growth process. Type IIa



November 11, 2025
IGI Report No LG745508015
ROUND BRILLIANT

7.98 - 8.04 X 5.04 MM

2.00 CARATS
D

Color Grade
VS 1

Clarity Grade
EXCELLENT

Depth
63%

Table
57%

Girdle
Medium (Faceted)

Culet
Pointed

Polish
EXCELLENT

Symmetry
EXCELLENT

Fluorescence
NONE

Inscription(s)
IGI LG745508015

Comments: This Laboratory Grown Diamond was created by Chemical Vapor Deposition (CVD) growth process. Type IIa