

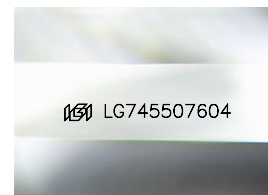
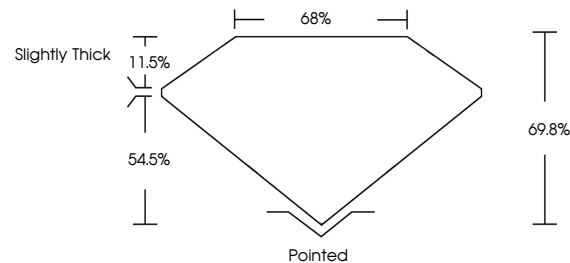


ELECTRONIC COPY

LABORATORY GROWN DIAMOND REPORT

LG745507604
Report verification at igi.org

PROPORTIONS



Sample Image Used

COLOR

D E F G H I J Faint Very Light Light

CLARITY

FL	IF	VVS ¹⁻²	VS ¹⁻²	SI ¹⁻²	I ¹⁻³
Flawless	Internally Flawless	Very Very Slightly Included	Very Slightly Included	Slightly Included	Included

LABORATORY GROWN DIAMOND REPORT



November 10, 2025

IGI Report Number **LG745507604**Description **LABORATORY GROWN DIAMOND**

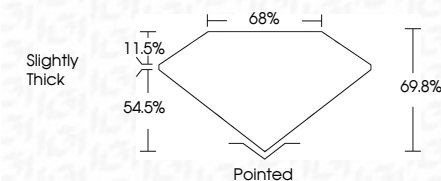
Shape and Cutting Style

Measurements **8.15 X 5.66 X 3.95 MM**

GRADING RESULTS

Carat Weight 1.55 CARAT

Color Grade E

Clarity Grade VVS 1

ADDITIONAL GRADING INFORMATION

Polish **EXCELLENT**Symmetry **EXCELLENT**Fluorescence **NONE**Inscription(s) LG745507604

Comments: This Laboratory Grown Diamond was created by Chemical Vapor Deposition (CVD) growth process.
Type IIa



© IGI 2020, International Gemological Institute

FD - 10 20

www.igi.org

THIS DOCUMENT WAS PRODUCED WITH THE FOLLOWING SECURITY MEASURES: SPECIAL DOCUMENT PAPER, INK SCREENS, WATERMARK, BACKGROUND DESIGNS, HOLOGRAM AND OTHER SECURITY FEATURES NOT LISTED AND DO EXCEED DOCUMENT SECURITY INDUSTRY GUIDELINE

November 10, 2025	GI Report No LG74597/604
CUT CORNERED RECT. MODIFIED BRILLIANT	
1.15 X 5.62 X 3.95 MM	1.55 CARAT
Color Grade	VVS 1
Clarity Grade	69.8%
Depth	66%
Table	Slightly Thick
Grade	Polished
Quiet	EXCELLENT
Polish	EXCELLENT
Symmetry	NONE
Fluorescence	LOI LG74597/604
Inscriptions(s)	
<p>Comments:</p> <p>This Laboratory Grown Diamond was created by Chemical Vapor Deposition (CVD) growth process.</p> <p>Type IIA</p>	