



**ELECTRONIC COPY**

## LABORATORY GROWN DIAMOND REPORT

LG745507473  
Report verification at [igi.org](https://www.igi.org)

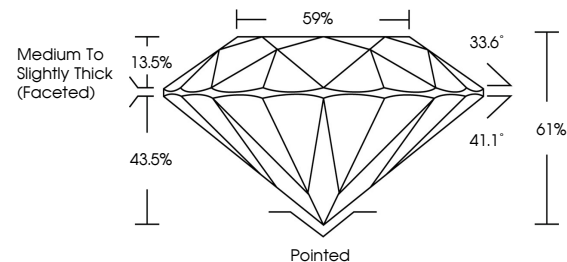
November 4, 2025	
IGI Report Number	LG745507473
Description	LABORATORY GROWN DIAMOND
Shape and Cutting Style	ROUND BRILLIANT
Measurements	6.63 - 6.66 X 4.05 MM
GRADING RESULTS	
Carat Weight	1.10 CARAT
Color Grade	D
Clarity Grade	VS 1
Cut Grade	IDEAL

### ADDITIONAL GRADING INFORMATION

Polish	EXCELLENT
Symmetry	EXCELLENT
Fluorescence	NONE
Inscription(s)	151 LG745507473

Comments: As Grown - No indication of post-growth treatment.  
This Laboratory Grown Diamond was created by High Pressure High Temperature (HPHT) growth process.  
Type II

## PROPORTIONS



Sample Image Used

## COLOR

D E F G H I J Faint Very Light Light

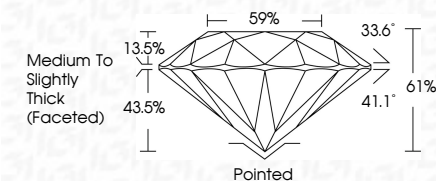
## CLARITY

FL	IF	VVS <sup>1-2</sup>	VS <sup>1-2</sup>	SI <sup>1-2</sup>	I <sup>1-3</sup>
Flawless	Internally Flawless	Very Very Slightly Included	Very Slightly Included	Slightly Included	Included

## LABORATORY GROWN DIAMOND REPORT



November 4, 2025	
IGI Report Number	LG745507473
Description	LABORATORY GROWN DIAMOND
Shape and Cutting Style	ROUND BRILLIANT
Measurements	6.63 - 6.66 X 4.05 MM
GRADING RESULTS	
Carat Weight	1.10 CARAT
Color Grade	D
Clarity Grade	VS 1
Cut Grade	IDEAL



### ADDITIONAL GRADING INFORMATION

Polish	EXCELLENT
Symmetry	EXCELLENT
Fluorescence	NONE
Inscription(s)	<del>(G)</del> LG745507473
<p>Comments: As Grown - No indication of post-growth treatment.</p> <p>This Laboratory Grown Diamond was created by High Pressure High Temperature (HPHT) growth process.</p> <p>Type II</p>	



© IGI 2020, International Gemological Institute

FD - 10 20

**www.igi.org**



THIS DOCUMENT WAS PRODUCED WITH THE FOLLOWING SECURITY MEASURES: SPECIAL DOCUMENT PAPER, INK SCREENS, WATERMARK, BACKGROUND DESIGNS, HOLOGRAM AND OTHER SECURITY FEATURES NOT LISTED AND DO EXCEED DOCUMENT SECURITY INDUSTRY GUIDELINE

November 4, 2025  
GI Report No LG745507473  
ROUND BRILLIANT

6.63 - 6.66 X 4.05 MM	1.10 CARAT	D
Color Grade	VS 1	IDEAL
Clarity Grade	VS 1	IDEAL
Cut Grade	VS 1	IDEAL
Depth	61%	59%
Table	Medium To Slightly Thick (Faceted)	Pointed
Girdle	Medium To Slightly Thick (Faceted)	EXCELLENT
Culet	Medium To Slightly Thick (Faceted)	EXCELLENT
Polish	Medium To Slightly Thick (Faceted)	EXCELLENT
Symmetry	Medium To Slightly Thick (Faceted)	EXCELLENT
Fluorescence	Medium To Slightly Thick (Faceted)	NONE
Measurements	Medium To Slightly Thick (Faceted)	4mm 1.27 1.27 1.27 1.27

**Comments:**  
As Grown - No indication of post-growth treatment.