



**ELECTRONIC COPY**

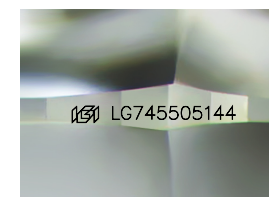
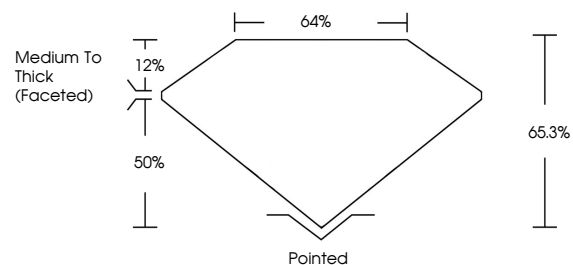
LG745505144  
Report verification at igi.org



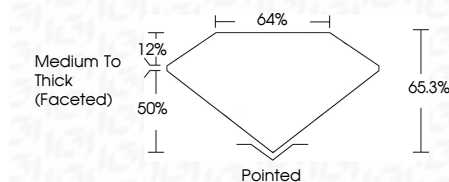
November 1, 2025  
IGI Report Number **LG745505144**  
Description **LABORATORY GROWN DIAMOND**  
Shape and Cutting Style **CUSHION MODIFIED BRILLIANT**  
Measurements **9.47 X 6.55 X 4.28 MM**  
**GRADING RESULTS**  
Carat Weight **2.21 CARATS**  
Color Grade **E**  
Clarity Grade **VVS 1**

November 1, 2025  
IGI Report Number **LG745505144**  
Description **LABORATORY GROWN DIAMOND**  
Shape and Cutting Style **CUSHION MODIFIED BRILLIANT**  
Measurements **9.47 X 6.55 X 4.28 MM**  
**GRADING RESULTS**  
Carat Weight **2.21 CARATS**  
Color Grade **E**  
Clarity Grade **VVS 1**

**PROPORTIONS**



Sample Image Used



**ADDITIONAL GRADING INFORMATION**

Polish **EXCELLENT**  
Symmetry **EXCELLENT**  
Fluorescence **NONE**  
Inscription(s) **IGI LG745505144**

Comments: As Grown - No indication of post-growth treatment.  
This Laboratory Grown Diamond was created by High Pressure High Temperature (HPHT) growth process. Type II

**ADDITIONAL GRADING INFORMATION**

Polish **EXCELLENT**  
Symmetry **EXCELLENT**  
Fluorescence **NONE**  
Inscription(s) **IGI LG745505144**  
Comments: As Grown - No indication of post-growth treatment.  
This Laboratory Grown Diamond was created by High Pressure High Temperature (HPHT) growth process. Type II

**COLOR**

D E F G H I J Faint Very Light Light

**CLARITY**

FL	IF	VVS <sup>1-2</sup>	VS <sup>1-2</sup>	SI <sup>1-2</sup>	I <sup>1-3</sup>
Flawless	Internally Flawless	Very Very Slightly Included	Very Slightly Included	Slightly Included	Included



**IGI**



November 1, 2025  
IGI Report No **LG745505144**  
**CUSHION MODIFIED BRILLIANT**  
**9.47 X 6.55 X 4.28 MM**  
2.21 CARATS  
E  
VVS 1  
65.3%  
64%  
Medium To Thick (Faceted)  
Pointed  
EXCELLENT  
EXCELLENT  
NONE  
IGI LG745505144

Comments: As Grown - No indication of post-growth treatment.  
This Laboratory Grown Diamond was created by High Pressure High Temperature (HPHT) growth process. Type II