



**INTERNATIONAL
GEMOLOGICAL
INSTITUTE**

ELECTRONIC COPY

LG744522708
Report verification at igi.org

LABORATORY GROWN DIAMOND REPORT



October 31, 2025

IGI Report Number **LG744522708**

Description	LABORATORY GROWN DIAMOND
-------------	--------------------------

Shape and Cutting Style **PEAR BRILLIANT**

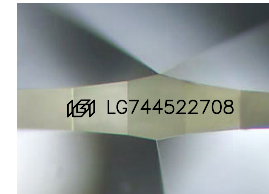
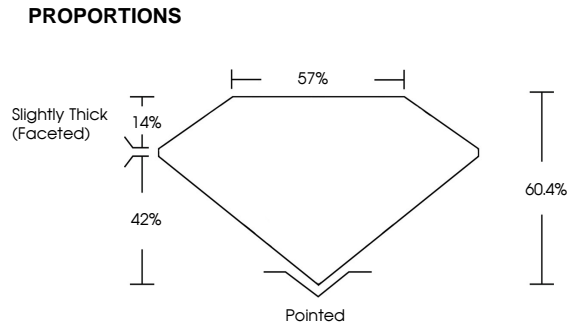
Measurements 12.88 X 8.14 X 4.92 MM

GRADING RESULTS

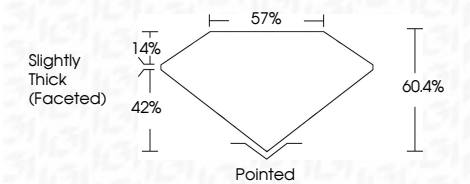
Carat Weight **3.07 CARATS**

Color Grade	E
-------------	---

Clarity Grade	VVS 1
---------------	-------



Sample Image Used



COLOR

D E F G H I J Faint Very Light Light

CLARITY

FL IF VWS¹⁻² VS¹⁻² SI¹⁻² I¹⁻³

Flawless	Internally Flawless	Very Slightly Included	Very Slightly Included	Slightly Included	Included
----------	---------------------	------------------------	------------------------	-------------------	----------



© IGI 2020, International Gemological Institute

FD - 10 20



THIS DOCUMENT WAS PRODUCED WITH THE FOLLOWING SECURITY MEASURES: SPECIAL DOCUMENT PAPER, INK SCREENS, WATERMARK BACKGROUND DESIGNS, HOLOGRAM AND OTHER SECURITY FEATURES NOT LISTED AND DO EXCEED DOCUMENT SECURITY INDUSTRY GUIDELINES.



IGI

October 31, 2025
IGI Report No LG74452708
PEAR BRILLIANT

1288 X 8.14 X 4.92 MM

12.88 X 8.14 X 4.92 MM
Carat Weight
3.07 CARATS

Color Grade E

Clarity Grade	WS 1
Depth	60.4%

Depin	60.4%
Table	57%

Girdle

Culet	Pointed

Polish	EXCELLENT
Symmetry	EXCELLENT

Symmetry	EXCELLENT
Fluorescence	NONE

Inscription(s)	1991 LG74452708

100

Comments:
As Grown - No Indication of post-growth treatment

treatment
This Laboratory Grown Diamond was created by High Pressure High

Created by High Pressure High Temperature (HPHT) growth process.
Type II