



**LABORATORY GROWN DIAMOND REPORT**

October 31, 2025  
 IGI Report Number **LG744520683**  
 Description **LABORATORY GROWN DIAMOND**  
 Shape and Cutting Style **HEXAGONAL MODIFIED STEP CUT**  
 Measurements **7.11 X 4.08 X 2.33 MM**

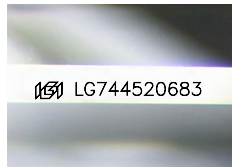
**GRADING RESULTS**

Carat Weight **0.50 CARAT**  
 Color Grade **D**  
 Clarity Grade **VVS 2**

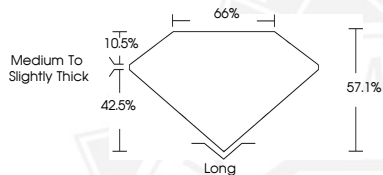
**ADDITIONAL GRADING INFORMATION**

Polish **EXCELLENT**  
 Symmetry **VERY GOOD**  
 Fluorescence **NONE**  
 Inscription(s) **IGI LG744520683**

Comments: This Laboratory Grown Diamond was created by Chemical Vapor Deposition (CVD) growth process. Type IIa



Sample Image Used



October 31, 2025  
 IGI Report Number **LG744520683**  
 HEXAGONAL MODIFIED STEP CUT  
 LABORATORY GROWN DIAMOND  
 7.11 X 4.08 X 2.33 MM  
 Carat Weight **0.50 CARAT**  
 Color Grade **D**  
 Clarity Grade **VVS 2**  
 Polish **EXCELLENT**  
 Symmetry **VERY GOOD**  
 Fluorescence **NONE**  
 Inscription(s) **IGI LG744520683**

Comments: This Laboratory Grown Diamond was created by Chemical Vapor Deposition (CVD) growth process. Type IIa



October 31, 2025  
 IGI Report Number **LG744520683**  
 HEXAGONAL MODIFIED STEP CUT  
 LABORATORY GROWN DIAMOND  
 7.11 X 4.08 X 2.33 MM  
 Carat Weight **0.50 CARAT**  
 Color Grade **D**  
 Clarity Grade **VVS 2**  
 Polish **EXCELLENT**  
 Symmetry **VERY GOOD**  
 Fluorescence **NONE**  
 Inscription(s) **IGI LG744520683**

Comments: This Laboratory Grown Diamond was created by Chemical Vapor Deposition (CVD) growth process. Type IIa



THIS DOCUMENT WAS PRODUCED WITH THE FOLLOWING SECURITY MEASURES: SPECIAL DOCUMENT PAPER, INK SCREENS, WATERMARK, BACKGROUND DESIGNS, HOLOGRAM AND OTHER SECURITY FEATURES NOT LISTED AND DO EXCEED DOCUMENT SECURITY INDUSTRY GUIDELINES.