



ELECTRONIC COPY

LG744516260
Report verification at igi.org



November 3, 2025
IGI Report Number **LG744516260**
Description **LABORATORY GROWN DIAMOND**
Shape and Cutting Style **EMERALD CUT**
Measurements **7.68 X 5.49 X 3.49 MM**
GRADING RESULTS
Carat Weight **1.62 CARAT**
Color Grade **FANCY VIVID BLUE**
Clarity Grade **VVS 2**

November 3, 2025
IGI Report Number **LG744516260**
Description **LABORATORY GROWN DIAMOND**
Shape and Cutting Style **EMERALD CUT**
Measurements **7.68 X 5.49 X 3.49 MM**

GRADING RESULTS

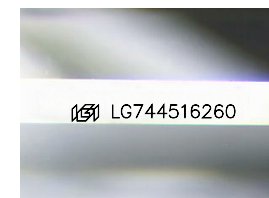
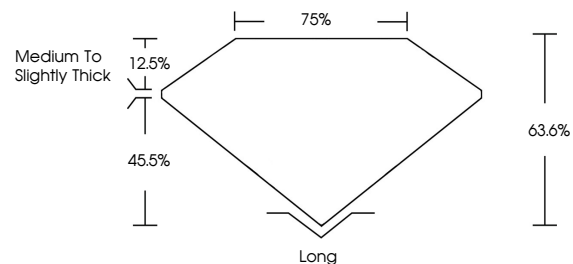
Carat Weight **1.62 CARAT**
Color Grade **FANCY VIVID BLUE**
Clarity Grade **VVS 2**

ADDITIONAL GRADING INFORMATION

Polish **VERY GOOD**
Symmetry **VERY GOOD**
Fluorescence **NONE**
Inscription(s) **IGI LG744516260**

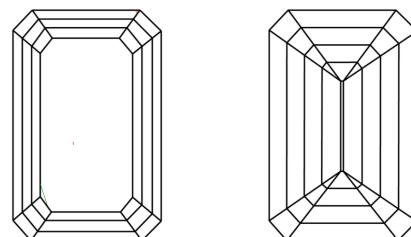
Comments: This Laboratory Grown Diamond was created by Chemical Vapor Deposition (CVD) growth process.
Indications of post-growth treatment.

PROPORTIONS



Sample Image Used

CLARITY CHARACTERISTICS



KEY TO SYMBOLS

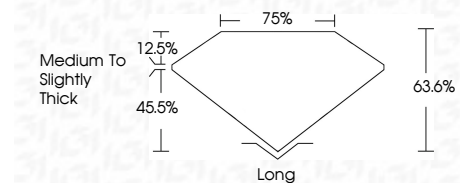
Red symbols indicate internal characteristics.
Green symbols indicate external characteristics.

COLOR

D E F G H I J Faint Very Light Light

CLARITY

FL	IF	VVS ¹⁻²	VS ¹⁻²	SI ¹⁻²	I ¹⁻³
Flawless	Internally Flawless	Very Very Slightly Included	Very Slightly Included	Slightly Included	Included



ADDITIONAL GRADING INFORMATION

Polish **VERY GOOD**
Symmetry **VERY GOOD**
Fluorescence **NONE**
Inscription(s) **IGI LG744516260**
Comments: This Laboratory Grown Diamond was created by Chemical Vapor Deposition (CVD) growth process.
Indications of post-growth treatment.



IGI



November 3, 2025
IGI Report No **LG744516260**
EMERALD CUT
7.68 X 5.49 X 3.49 MM
Carat Weight **1.62 CARAT**
Color Grade **FANCY VIVID BLUE**
Clarity Grade **VVS 2**
Depth **45.5%**
Table **12.5%**
Girdle **Medium to Slightly Thick**
Culet **Long**
Polish **VERY GOOD**
Symmetry **VERY GOOD**
Fluorescence **NONE**
Inscription(s) **IGI LG744516260**
Comments: This Laboratory Grown Diamond was created by Chemical Vapor Deposition (CVD) growth process.
Indications of post-growth treatment.