

**ELECTRONIC COPY**

## LABORATORY GROWN DIAMOND REPORT

|                         |                          |
|-------------------------|--------------------------|
| November 27, 2025       |                          |
| IGI Report Number       | LG744515186              |
| Description             | LABORATORY GROWN DIAMOND |
| Shape and Cutting Style | ROUND BRILLIANT          |
| Measurements            | 9.44 - 9.50 X 5.91 MM    |

## GRADING RESULTS

|               |                     |
|---------------|---------------------|
| Carat Weight  | 3.26 CARATS         |
| Color Grade   | D                   |
| Clarity Grade | INTERNALLY FLAWLESS |
| Cut Grade     | IDEAL               |

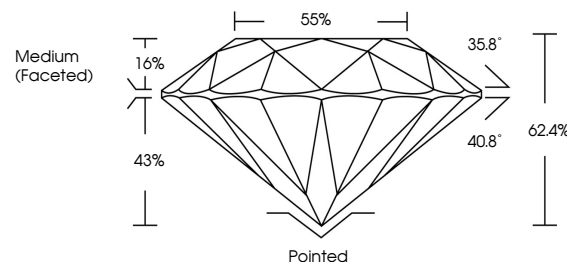
### ADDITIONAL GRADING INFORMATION

|                |   |
|----------------|---|
| Polish         | EXCELLENT   |
| Symmetry       | EXCELLENT   |
| Fluorescence   | NONE  |
| Inscription(s) |  LG744515186 |

Comments: As Grown - No indication of post-growth treatment.  
This Laboratory Grown Diamond was created by High Pressure High Temperature (HPHT) growth process.  
Type II

LG744515186  
Report verification at [lgi.org](https://lgi.org)

## PROPORTIONS

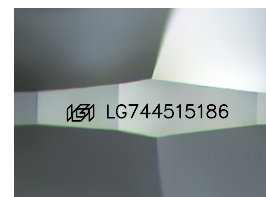


## CLARITY CHARACTERISTICS



### KEY TO SYMBOLS

Red symbols indicate internal characteristics.  
Green symbols indicate external characteristics.



Sample Image Used

## COLOR

D E F G H I J      Faint      Very Light      Light

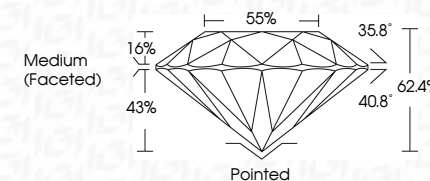
## CLARITY

| FL       | IF                  | VVS <sup>1-2</sup>          | VS <sup>1-2</sup>      | SI <sup>1-2</sup> | I <sup>1-3</sup> |
|----------|---------------------|-----------------------------|------------------------|-------------------|------------------|
| Flawless | Internally Flawless | Very Very Slightly Included | Very Slightly Included | Slightly Included | Included         |

## LABORATORY GROWN DIAMOND REPORT



|                         |                          |
|-------------------------|--------------------------|
| November 27, 2025       |                          |
| IGI Report Number       | LG744515186              |
| Description             | LABORATORY GROWN DIAMOND |
| Shape and Cutting Style | ROUND BRILLIANT          |
| Measurements            | 9.44 - 9.50 X 5.91 MM    |
| <b>GRADING RESULTS</b>  |                          |
| Carat Weight            | 3.26 CARATS              |
| Color Grade             | D                        |
| Clarity Grade           | INTERNALLY FLAWLESS      |
| Cut Grade               | IDEAL                    |



### ADDITIONAL GRADING INFORMATION

|  |                            |
|--|----------------------------|
| Polish   | EXCELLENT                  |
| Symmetry   | EXCELLENT                  |
| Fluorescence   | NONE                       |
| Inscription(s)   | <del>151</del> LG744515186 |
| Comments: As Grown - No indication of post-growth treatment.                                       |                            |
| This Laboratory Grown Diamond was created by High Pressure High Temperature (HPHT) growth process. |                            |
| Type II  |                            |



© IGI 2020, International Gemological Institute

FD - 10 20

November 27, 2025  
 IGI Report No LG744515186  
 ROUNDBRILLANT

|                 |                       |               |                  |
|-----------------|-----------------------|---------------|------------------|
| ROUND BRILLIANT | 9.94 - 9.50 X 5.91 MM | Color Weight  | 3.26 CARATS      |
|                 |                       | Color Grade   | D                |
|                 |                       | Clarity Grade | I.F              |
|                 |                       | Cut Grade     | IDEAL            |
|                 |                       | Depth         | 62.4%            |
|                 |                       | Table         | 55%              |
|                 |                       | Girdle        | Medium (Faceted) |
|                 |                       | Culet         | Pointed          |
|                 |                       | Polish        | EXCELLENT        |
|                 |                       | Symmetry      | EXCELLENT        |
|                 |                       | Fluorescence  | NONE             |

**Comments:**  
As Grown - No indication of post-growth treatment.  
This Laboratory Grown Diamond was created by High Pressure High Temperature (HPHT) growth process.