



ELECTRONIC COPY

LG744515035
Report verification at igi.org



January 16, 2026
IGI Report Number LG744515035
Description LABORATORY GROWN DIAMOND
Shape and Cutting Style SQUARE CUSHION MODIFIED BRILLIANT
Measurements 9.77 X 9.67 X 6.66 MM
GRADING RESULTS
Carat Weight 5.02 CARATS
Color Grade D
Clarity Grade INTERNALLY FLAWLESS

LABORATORY GROWN DIAMOND REPORT

January 16, 2026
IGI Report Number LG744515035
Description LABORATORY GROWN DIAMOND
Shape and Cutting Style SQUARE CUSHION MODIFIED BRILLIANT
Measurements 9.77 X 9.67 X 6.66 MM

GRADING RESULTS

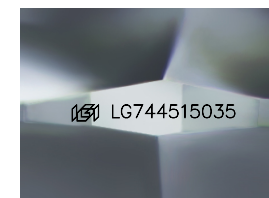
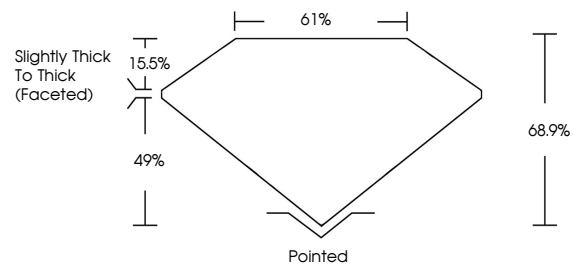
Carat Weight 5.02 CARATS
Color Grade D
Clarity Grade INTERNALLY FLAWLESS

ADDITIONAL GRADING INFORMATION

Polish EXCELLENT
Symmetry EXCELLENT
Fluorescence NONE
Inscription(s) IGI LG744515035

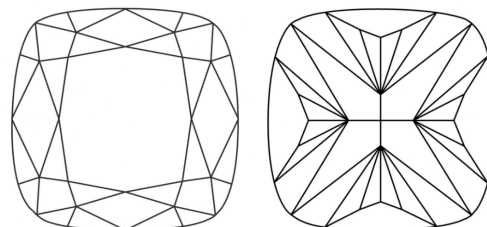
Comments: As Grown - No indication of post-growth treatment.
This Laboratory Grown Diamond was created by High Pressure High Temperature (HPHT) growth process.
Type II

PROPORTIONS



Sample Image Used

CLARITY CHARACTERISTICS



KEY TO SYMBOLS

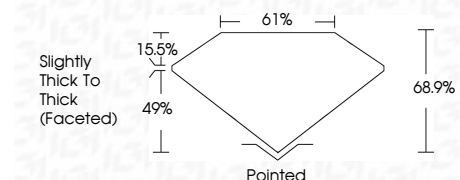
Red symbols indicate internal characteristics.
Green symbols indicate external characteristics.

COLOR

D E F G H I J Faint Very Light Light

CLARITY

Table with columns for clarity grades: FL, IF, VS 1-2, VVS 1-2, SI 1-2, I 1-3 and corresponding descriptions: Flawless, Internally Flawless, Very Very Slightly Included, Very Slightly Included, Slightly Included, Included.



ADDITIONAL GRADING INFORMATION

Polish EXCELLENT
Symmetry EXCELLENT
Fluorescence NONE
Inscription(s) IGI LG744515035
Comments: As Grown - No indication of post-growth treatment.
This Laboratory Grown Diamond was created by High Pressure High Temperature (HPHT) growth process.
Type II



January 16, 2026
IGI Report No LG744515035
SQUARE CUSHION MODIFIED BRILLIANT
9.77 X 9.67 X 6.66 MM
5.02 CARATS
D
5.02 CARATS
D
EXCELLENT
EXCELLENT
NONE
IGI LG744515035
Comments: As Grown - No indication of post-growth treatment.
This Laboratory Grown Diamond was created by High Pressure High Temperature (HPHT) growth process.
Type II