

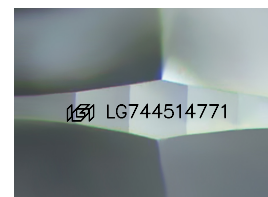
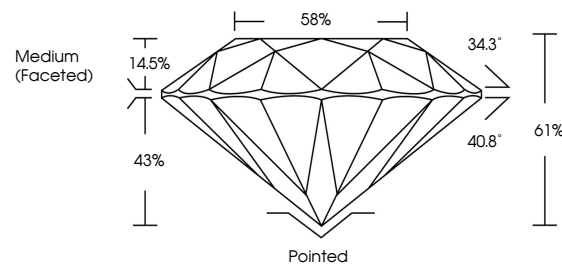


**ELECTRONIC COPY**

## LABORATORY GROWN DIAMOND REPORT

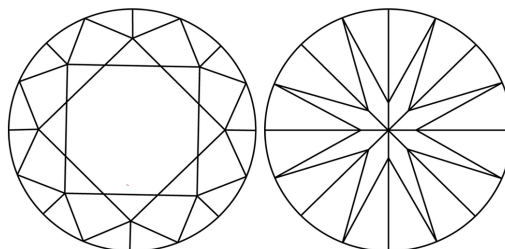
LG744514771  
Report verification at [igi.org](https://www.igi.org)

## PROPORTIONS



Sample Image Used

## CLARITY CHARACTERISTICS



## KEY TO SYMBOLS

Red symbols indicate internal characteristics.  
Green symbols indicate external characteristics.

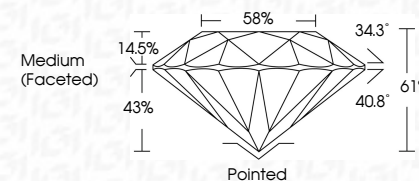


**www.igi.org**

## LABORATORY GROWN DIAMOND REPORT



January 6, 2026	
IGI Report Number	LG744514771
Description	LABORATORY GROWN DIAMOND
Shape and Cutting Style	ROUND BRILLIANT
Measurements	10.84 - 10.89 X 6.62 MM
<b>GRADING RESULTS</b>	
Carat Weight	4.80 CARATS
Color Grade	D
Clarity Grade	VVS 1
Cut Grade	IDEAL



### ADDITIONAL GRADING INFORMATION

Polish	EXCELLENT
Symmetry	EXCELLENT
Fluorescence	NONE
Inscription(s)	 LG744514771
Comments: HEARTS & ARROWS	
As Grown - No indication of post-growth treatment.	
This Laboratory Grown Diamond was created by High Pressure High Temperature (HPHT) growth process.	
Type II	



© IGI 2020, International Gemological Institute

FD - 10 20



THIS DOCUMENT WAS PRODUCED WITH THE FOLLOWING SECURITY MEASURES: SPECIAL DOCUMENT PAPER, INK SCREENS, WATERMARK, BACKGROUND DESIGNS, HOLOGRAM AND OTHER SECURITY FEATURES NOT LISTED AND DO EXCEED DOCUMENT SECURITY INDUSTRY GUIDELINE

January 6, 2026  
GI Report No LG744514771

GI Report No LG74

**ROUND BRILLIANT**

10.84 - 10.89 X 6.62 MM

Carat Weight	4.80 CARATS	D
Color Grade		

**APPENDIX**

Clarity Grade	VS1	IDEAL
Clarity Grade		
Cut Grade		

Call Grade	IDEAL
Depth	61%

Table	58%
-------	-----

Girdle

Outlet	Pointed	Excellent
Outlet		
Outlet		

Excellent

Excellent

Fluorescence

NONE

Inscription(s)  
191 LG744514771

Comments:

**HEARTS & ARROWS**  
As Grown - No indication of post-grow with

**Abstract** The management of poor growth treatment.

laboratory growth diamond was created by high pressure high

temperature (HPHT) growth process,  
type II