

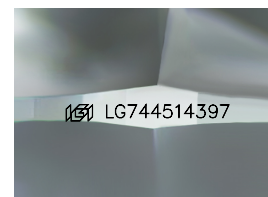
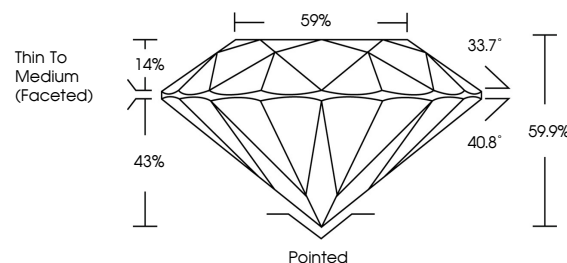


ELECTRONIC COPY

LABORATORY GROWN DIAMOND REPORT

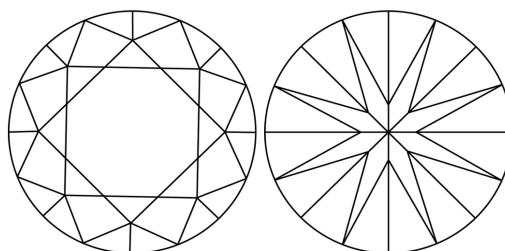
LG744514397
Report verification at igi.org

PROPORTIONS



Sample Image Used

CLARITY CHARACTERISTICS



KEY TO SYMBOLS

Red symbols indicate internal characteristics.
Green symbols indicate external characteristics.

COLOR

D E F G H I J Faint Very Light Light

CLARITY

FL	IF	VVS ¹⁻²	VS ¹⁻²	SI ¹⁻²	I ¹⁻³
Flawless	Internally Flawless	Very Very Slightly Included	Very Slightly Included	Slightly Included	Included

LABORATORY GROWN DIAMOND REPORT



December 29, 2025

IGI Report Number **LG744514397**Description **LABORATORY GROWN DIAMOND**Shape and Cutting Style **ROUND BRILLIANT**

Measurements	8.94 - 9.01 X 5.38 MM
--------------	-----------------------

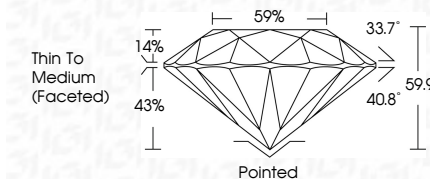
GRADING RESULTS

Carat Weight **2.63 CARATS**

Color Grade

Clarity Grade **INTERNALLY FLAWLESS**

Cut Grade **IDEAL**



ADDITIONAL GRADING INFORMATION

Polish **EXCELLENT**Symmetry **EXCELLENT**Fluorescence **NONE**Inscription(s) LG744514397

Comments: As Grown - No indication of post-growth treatment.

This Laboratory Grown Diamond was created by High Pressure High Temperature (HPHT) growth process.

Type II



© IGI 2020, International Gemological Institute

FD - 10 20

www.igi.org

THIS DOCUMENT WAS PRODUCED WITH THE FOLLOWING SECURITY MEASURES: SPECIAL DOCUMENT PAPER, INK SCREENS, WATERMARK, BACKGROUND DESIGNS, HOLOGRAM AND OTHER SECURITY FEATURES NOT LISTED AND DO EXCEED DOCUMENT SECURITY INDUSTRY GUIDELINE

December 29, 2025
IGI Report No LG744514397
ROUND BRILLIANT

8.94 - 9.01 X 5.38 MM	Carat Weight	2.63 CARATS
	Color Grade	D
	Clarity Grade	IF
	Cut Grade	IDEAL
	Depth	59.9%
	Table	59%
	Girdle	Thin To Medium (faceted)
	Culet	Pointed
	Polish	EXCELLENT
	Symmetry	EXCELLENT
	Fluorescence	NONE
		DATE 1/27/15 1502

Comments:
As Grown - No Indication of post-growth
treatment.
This Laboratory Grown Diamond was
created by High Pressure High
Temperature (HPHT) growth process.