



ELECTRONIC COPY

LABORATORY GROWN DIAMOND REPORT

December 19, 2025	
IGI Report Number	LG744514227
Description	LABORATORY GROWN DIAMOND
Shape and Cutting Style	ROUND BRILLIANT
Measurements	9.84 - 9.88 X 6.05 MM

GRADING RESULTS

Carat Weight	3.62 CARATS
Color Grade	D
Clarity Grade	INTERNALLY FLAWLESS
Cut Grade	IDEAL

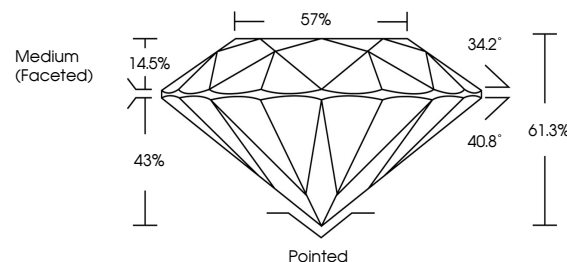
ADDITIONAL GRADING INFORMATION

Polish	EXCELLENT
Symmetry	EXCELLENT
Fluorescence	NONE
Inscription(s)	 LG744514227

Comments: HEARTS & ARROWS
As Grown - No indication of post-growth treatment.
This Laboratory Grown Diamond was created by High
Pressure High Temperature (HPHT) growth process.
Type II

LG744514227
Report verification at lgi.org

PROPORTIONS



CLARITY CHARACTERISTICS

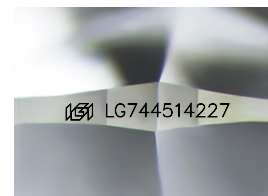


KEY TO SYMBOLS

Red symbols indicate internal characteristics.
Green symbols indicate external characteristics.



www.igi.org



Sample Image Used

COLOR

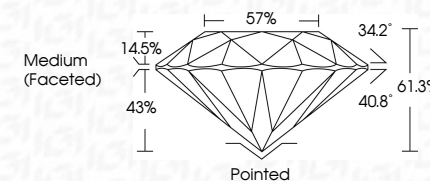
D E F G H I J Faint Very Light Light

CLARITY

FL	IF	VVS ¹⁻²	VS ¹⁻²	SI ¹⁻²	I ¹⁻³
Flawless	Internally Flawless	Very Very Slightly Included	Very Slightly Included	Slightly Included	Included



December 19, 2025	
IGI Report Number	LG744514227
Description	LABORATORY GROWN DIAMOND
Shape and Cutting Style	ROUND BRILLIANT
Measurements	9.84 - 9.88 X 6.05 MM
GRADING RESULTS	
Carat Weight	3.62 CARATS
Color Grade	D
Clarity Grade	INTERNALLY FLAWLESS
Cut Grade	IDEAL



ADDITIONAL GRADING INFORMATION

Polish	EXCELLENT
Symmetry	EXCELLENT
Fluorescence	NONE
Inscription(s)	 LG744514227
Comments: HEARTS & ARROWS	
As Grown - No indication of post-growth treatment.	
This Laboratory Grown Diamond was created by High Pressure High Temperature (HPHT) growth process.	
Type II	



IG

December 19, 2025	3.62 CARATS	Pointed
GJ Report No. GJ7445/4227	D	EXCELLENT
ROUND BRILLIANT	LF	EXCELLENT
	IDEAL	NONE
	61.3%	1691 GJ7445/4227
	57%	
	Medium (Faceted)	
		Culet
		Polish
		Symmetry
		Fluorescence
		Inscriptions(s)
		Comments:
		-REMARKS - No indication of post-growth treatment.
		-This Laboratory Grown Diamond was created by High Pressure High Temperature (HPHT) growth process.

