



**ELECTRONIC COPY**

## LABORATORY GROWN DIAMOND REPORT

December 19, 2025	
IGI Report Number	LG744514226
Description	LABORATORY GROWN DIAMOND
Shape and Cutting Style	ROUND BRILLIANT
Measurements	9.75 - 9.81 X 6.05 MM

## GRADING RESULTS

Carat Weight	3.55 CARATS
Color Grade	D
Clarity Grade	INTERNALLY FLAWLESS
Cut Grade	IDEAL

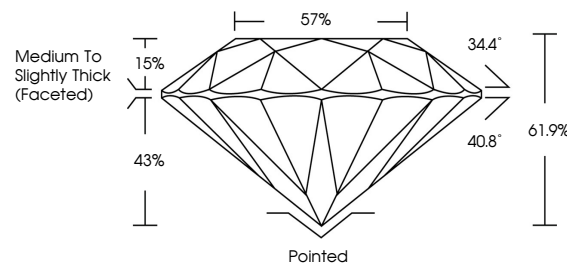
### ADDITIONAL GRADING INFORMATION

Polish	EXCELLENT
Symmetry	EXCELLENT
Fluorescence	NONE
Inscription(s)	 LG744514226

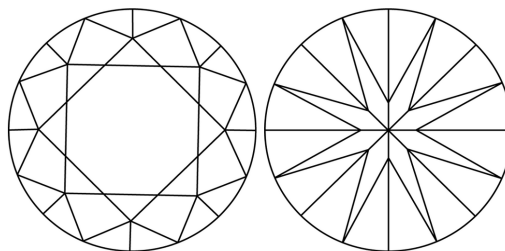
Comments: HEARTS & ARROWS  
As Grown - No indication of post-growth treatment.  
This Laboratory Grown Diamond was created by High  
Pressure High Temperature (HPHT) growth process.  
Type II

LG744514226  
Report verification at [igi.org](https://igi.org)

## PROPORTIONS

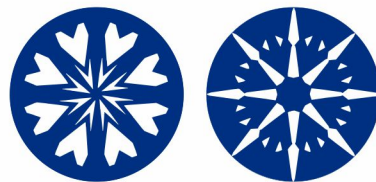


## CLARITY CHARACTERISTICS

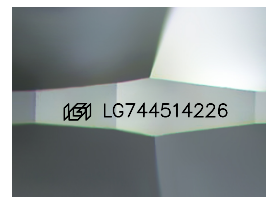


### KEY TO SYMBOLS

Red symbols indicate internal characteristics.  
Green symbols indicate external characteristics.



**www.igi.org**



Sample Image Used

## COLOR

D E F G H I J Faint Very Light Light

## CLARITY

FL	IF	VVS <sup>1-2</sup>	VS <sup>1-2</sup>	SI <sup>1-2</sup>	I <sup>1-3</sup>
Flawless	Internally Flawless	Very Very Slightly Included	Very Slightly Included	Slightly Included	Included



© IGI 2020, International Gemological Institute

FD - 10 20



THIS DOCUMENT WAS PRODUCED WITH THE FOLLOWING SECURITY MEASURES: SPECIAL DOCUMENT PAPER, INK SCREENS, WATERMARK BACKGROUND DESIGNS, HOLOGRAM AND OTHER SECURITY FEATURES NOT LISTED AND DO EXCEED DOCUMENT SECURITY INDUSTRY GUIDELINES

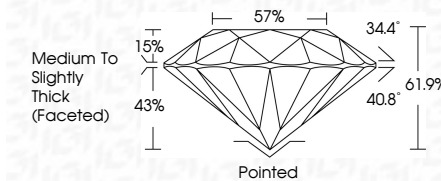
## LABORATORY GROWN DIAMOND REPORT



December 19, 2025	
IGI Report Number	LG744514226
Description	LABORATORY GROWN DIAMOND
Shape and Cutting Style	ROUND BRILLIANT
Measurements	9.75 - 9.81 X 6.05 MM

## GRADING RESULTS

Carat Weight	3.55 CARATS
Color Grade	D
Clarity Grade	INTERNALLY FLAWLESS
Cut Grade	IDEAL



### ADDITIONAL GRADING INFORMATION

Polish	EXCELLENT
Symmetry	EXCELLENT
Fluorescence	NONE
Inscription(s)	(16) LG744514226

Comments: HEARTS & ARROWS  
As Grown - No indication of post-growth treatment.  
This Laboratory Grown Diamond was created by High  
Pressure High Temperature (HPHT) growth process.  
Type II



IG

December 19, 2025  
IGI Report No LG744514226  
ROUND BRILLIANT

Color Weight	3.55 CARATS
Color Grade	D
Clarity Grade	IF
Cut Grade	IDEAL
Depth	61.9%
Table	57%
Grade	Medium to Slightly Thick (Faceted)
Culet	Pointed
Polish	EXCELLENT
Symmetry	EXCELLENT
Fluorescence	NONE
Report #	1.2714611204

**Comments:**  
HEARTS & ARROWS  
As Grown - No Indication of post-growth treatment.