

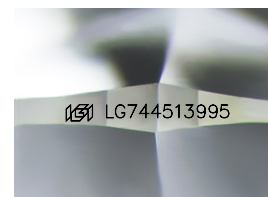
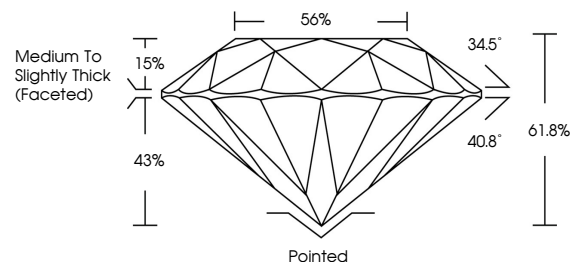


ELECTRONIC COPY

LABORATORY GROWN DIAMOND REPORT

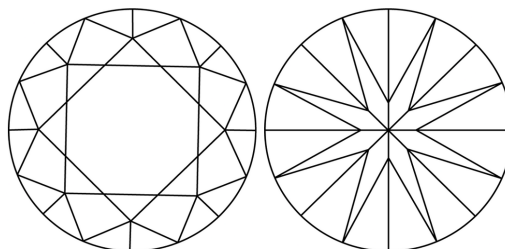
LG744513995
Report verification at lgi.org

PROPORTIONS



Sample Image Used

CLARITY CHARACTERISTICS



KEY TO SYMBOLS

Red symbols indicate internal characteristics.
Green symbols indicate external characteristics.



www.igi.org

LABORATORY GROWN DIAMOND REPORT



December 23, 2025

IGI Report Number **LG744513995**Description **LABORATORY GROWN DIAMOND**Shape and Cutting Style **ROUND BRILLIANT**

Measurements 9.69 - 9.74 X 6.01 MM

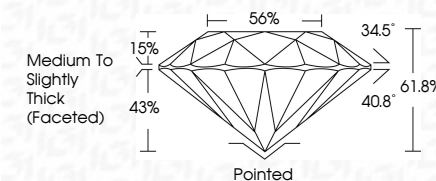
GRADING RESULTS

Carat Weight 3.52 CARATS

Color Grade

Clarity Grade **FLAWLESS**

Cut Grade **IDEAL**



ADDITIONAL GRADING INFORMATION

Polish EXCELLENT

Symmetry **EXCELLENT**Fluorescence **NONE**Inscription(s) LG744513995

Comments: HEARTS & ARROWS

As Grown - No indication of post-growth treatment.

This Laboratory Grown Diamond was created by High Pressure High Temperature (HPHT) growth process.

Type II



| | |
|--|--|
| | December 23, 2026 |
| | GJ Report No.GJ744519995 |
| | ROUND BRILLIANT |
| | 3.52 CARATS D |
| | Color Grade |
| | Clarity Grade |
| | Cut Grade |
| | Depth |
| | Tabelle |
| | Grade |
| | Medium to Slightly Thick (faceted) |
| | Painted |
| | EXCELLENT |
| | Symmetry |
| | Fluorescence |
| | NONE |
| | (#) L5744613995 |
| | Comments: |
| | HEARTS & ARROWS |
| | As Grown - No indication of post-growth treatment. |
| | This Laboratory Grown Diamond was created by a process where High temperature, high pressure growth process (HPHT) growth process. |
| | Type II |



THIS DOCUMENT WAS PRODUCED WITH THE FOLLOWING SECURITY MEASURES: SPECIAL DOCUMENT PAPER, INK SCREENS, WATERMARK, BACKGROUND DESIGNS, HOLOGRAM AND OTHER SECURITY FEATURES NOT LISTED AND DO EXCEED DOCUMENT SECURITY INDUSTRY GUIDELINES