

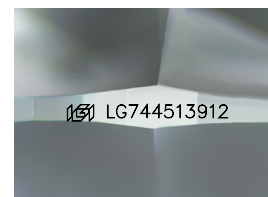
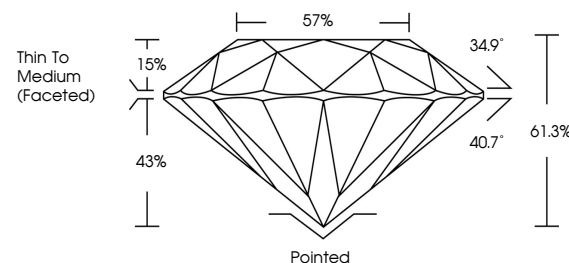


**ELECTRONIC COPY**

## LABORATORY GROWN DIAMOND REPORT

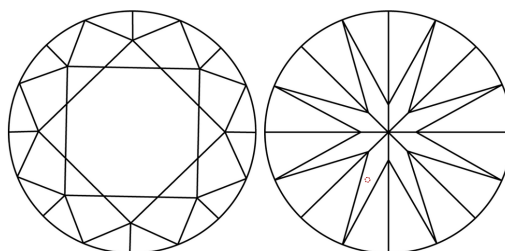
LG744513912  
Report verification at [igi.org](https://igi.org)

## PROPORTIONS



Sample Image Used

## CLARITY CHARACTERISTICS



### KEY TO SYMBOLS

Red symbols indicate internal characteristics.  
Green symbols indicate external characteristics.



**www.igi.org**

## LABORATORY GROWN DIAMOND REPORT



December 19, 2025

IGI Report Number **LG744513912**Description **LABORATORY GROWN DIAMOND**Shape and Cutting Style **ROUND BRILLIANT**

Measurements 8.93 - 8.98 X 5.49 MM

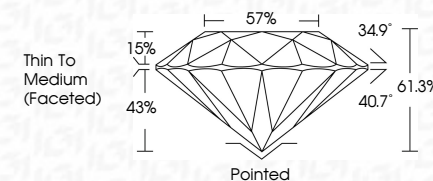
## GRADING RESULTS

Carat Weight **2.69 CARATS**

Color Grade

Clarity Grade WS 1

Cut Grade **IDEAL**



### ADDITIONAL GRADING INFORMATION

Polish **EXCELLENT**Symmetry **EXCELLENT**Fluorescence **NONE**Inscription(s)  LG744513912

Comments: HEARTS & ARROWS

As Grown - No indication of post-growth treatment.

This Laboratory Grown Diamond was created by High Pressure High Temperature (HPHT) growth process.

Type II



IG

© IGI 2020, International Gemological Institute

FD - 10 20



THIS DOCUMENT WAS PRODUCED WITH THE FOLLOWING SECURITY MEASURES: SPECIAL DOCUMENT PAPER, INK SCREENS, WATERMARK, BACKGROUND DESIGNS, HOLOGRAM AND OTHER SECURITY FEATURES NOT LISTED AND DO EXCEED DOCUMENT SECURITY INDUSTRY GUIDELINES

December 19, 2025  
IGI Report No LG744513912  
ROUND BRILLIANT

8.93 - 8.99 X 5.49 MM	2.69 CARATS
Carat Weight	VVS 1
Color Grade	IDEAL
Clarity Grade	61.5%
Cut Grade	57%
Depth	Thin To Medium (faceted)
Table	
Girdle	
Culet	Pointed
Polish	EXCELLENT
Symmetry	EXCELLENT
Fluorescence	NONE
Inspection(s)	Jan 1/27/19/1012

**Comments:**  
**HEARTS & ARROWS**  
As Grown - No Indication of post-growth treatment.