



ELECTRONIC COPY

LABORATORY GROWN DIAMOND REPORT

December 17, 2025	
IGI Report Number	LG744513759
Description	LABORATORY GROWN DIAMOND
Shape and Cutting Style	ROUND BRILLIANT
Measurements	10.17 - 10.20 X 6.27 MM

GRADING RESULTS

Carat Weight	4.01 CARATS
Color Grade	D
Clarity Grade	VVS 1
Cut Grade	IDEAL

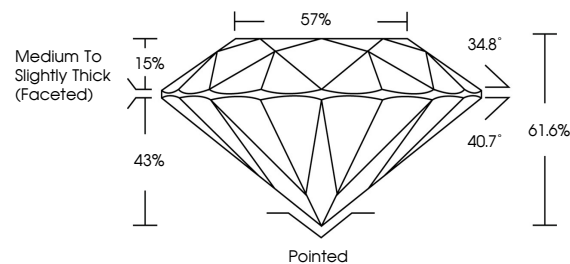
ADDITIONAL GRADING INFORMATION

Polish	EXCELLENT
Symmetry	EXCELLENT
Fluorescence	NONE
Inscription(s)	 LG744513759

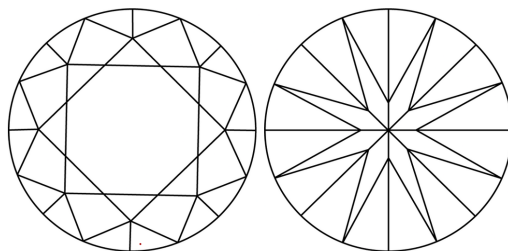
Comments: HEARTS & ARROWS
As Grown - No indication of post-growth treatment.
This Laboratory Grown Diamond was created by High
Pressure High Temperature (HPHT) growth process.
Type II

LG744513759
Report verification at igi.org

PROPORTIONS

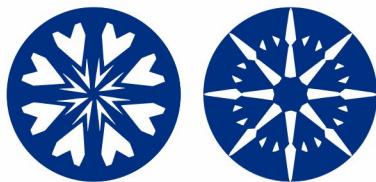


CLARITY CHARACTERISTICS

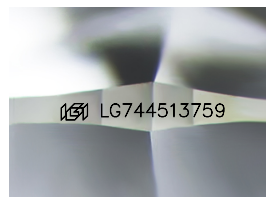


KEY TO SYMBOLS

Red symbols indicate internal characteristics.
Green symbols indicate external characteristics.



www.igi.org



Sample Image Used

COLOR

D E F G H I J Faint Very Light Light

CLARITY

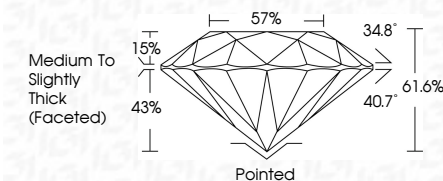
FL	IF	VVS ¹⁻²	VS ¹⁻²	SI ¹⁻²	I ¹⁻³
Flawless	Internally Flawless	Very Very Slightly Included	Very Slightly Included	Slightly Included	Included



December 17, 2025	
IGI Report Number	LG744513759
Description	LABORATORY GROWN DIAMOND
Shape and Cutting Style	ROUND BRILLIANT
Measurements	10.17 - 10.20 X 6.27 MM

GRADING RESULTS

Carat Weight	4.01 CARATS
Color Grade	D
Clarity Grade	VVS 1
Cut Grade	IDEAL



ADDITIONAL GRADING INFORMATION

Polish	EXCELLENT
Symmetry	EXCELLENT
Fluorescence	NONE
Inscription(s)	153 LG744513759

Comments: HEARTS & ARROWS
As Grown - No indication of post-growth treatment.
This Laboratory Grown Diamond was created by High
Pressure High Temperature (HPHT) growth process.
Type II



IG



© IGI 2020, International Gemological Institute

FD - 10 20



THIS DOCUMENT WAS PRODUCED WITH THE FOLLOWING SECURITY MEASURES: SPECIAL DOCUMENT PAPER, INK SCREENS, WATERMARK, BACKGROUND DESIGNS, HOLOGRAM AND OTHER SECURITY FEATURES NOT LISTED AND DO EXCEED DOCUMENT SECURITY INDUSTRY GUIDELINES

December 17, 2025
IGI Report No LG744513759
ROUND BRILLIANT

Carat Weight	10.17 - 10.20 X 6.27 MM	4.01 CARATS
Color Grade		D
Clarity Grade		VVS 1
Cut Grade		IDEAL
Depth		61.6%
Table		57%
Girdle		Medium to Slightly Thick (Faceted=0)
Culet		Pointed
Polish		EXCELLENT
Symmetry		EXCELLENT
Fluorescence		NONE
Fluorescence Intensity		less than 1.574/41.3752

Comments:
HEARTS & ARROWS
As Grown - No Indication of post-growth
treatment
This Laboratory Grown Diamond was
credited by High Pressure High
Temperature (HPHT) growth process.