

ELECTRONIC COPY

LABORATORY GROWN DIAMOND REPORT

December 18, 2025	
IGI Report Number	LG744513749
Description	LABORATORY GROWN DIAMOND
Shape and Cutting Style	ROUND BRILLIANT
Measurements	9.12 - 9.15 X 5.63 MM

GRADING RESULTS

Carat Weight	2.88 CARATS
Color Grade	D
Clarity Grade	FLAWLESS
Cut Grade	IDEAL

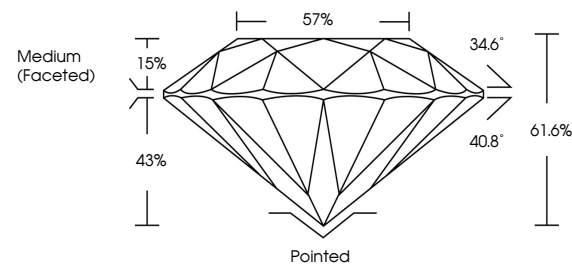
ADDITIONAL GRADING INFORMATION

Polish	EXCELLENT
Symmetry	EXCELLENT
Fluorescence	NONE
Inscription(s)	 LG744513749

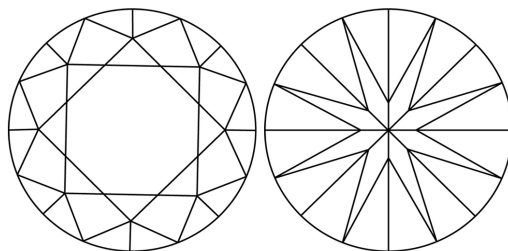
Comments: As Grown - No indication of post-growth treatment.
This Laboratory Grown Diamond was created by High Pressure High Temperature (HPHT) growth process.
Type II

LG744513749
Report verification at igi.org

PROPORTIONS

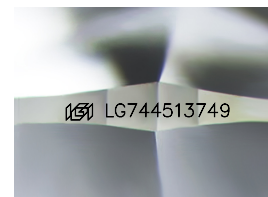


CLARITY CHARACTERISTICS



KEY TO SYMBOLS

Red symbols indicate internal characteristics.
Green symbols indicate external characteristics.



Sample Image Used

COLOR

D E F G H I J Faint Very Light Light

CLARITY

FL	IF	VVS ¹⁻²	VS ¹⁻²	SI ¹⁻²	I ¹⁻³
Flawless	Internally Flawless	Very Very Slightly Included	Very Slightly Included	Slightly Included	Included

LABORATORY GROWN DIAMOND REPORT



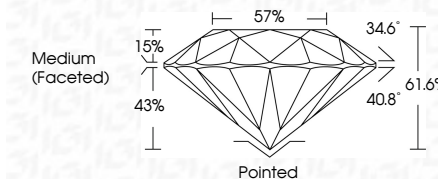
December 18, 2025	
IGI Report Number	LG744513749
Description	LABORATORY GROWN DIAMOND
Shape and Cutting Style	ROUND BRILLIANT
Measurements	9.12 - 9.15 X 5.63 MM

GRADING RESULTS

Carat Weight	2.88 CARATS
Color Grade	D
Clarity Grade	FLAWLESS
Cut Grade	IDEAL

ADDITIONAL GRADING INFORMATION

Polish	EXCELLENT
Symmetry	EXCELLENT
Fluorescence	NONE
Inscription(s)	 LG744513749
Comments: As Grown - No indication of post-growth treatment.	
This Laboratory Grown Diamond was created by High Pressure High Temperature (HPHT) growth process.	
Type II	



© IGI 2020, International Gemological Institute

FD - 10 20

December 18, 2025
ICI Report No LG744513749
ROUND BRILLIANT

9.12 - 9.15 X 5.63 MM		2.88 CARATS	
Carat Weight		Color Grade	D
Clarity Grade		Flawless	
Cut Grade		Ideal	
Depth		61.6%	
Table		57%	
Girdle		Medium (Faceted)	
Culet		Pointed	
Polish		Excellent	
Symmetry		Excellent	
Fluorescence		None	

Comments:
As Grown - No indication of post-growth treatment.
This Laboratory Grown Diamond was created by High Pressure High Temperature (HPHT) growth process.