



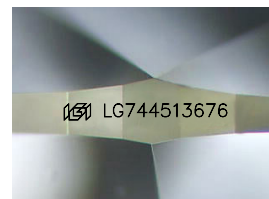
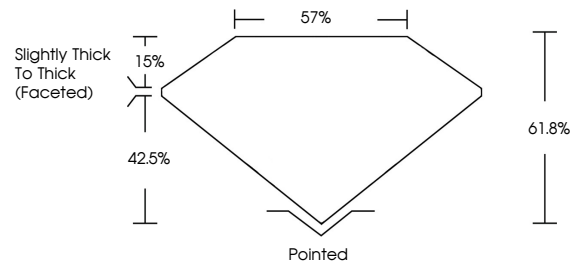
**INTERNATIONAL
GEMOLOGICAL
INSTITUTE**

ELECTRONIC COPY

LABORATORY GROWN DIAMOND REPORT

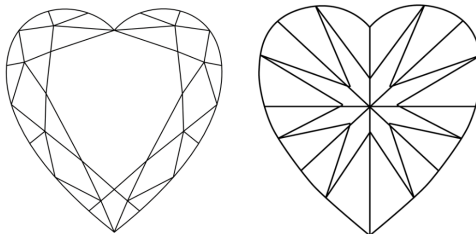
LG744513676
Report verification at [igi.org](https://www.igi.org)

PROPORTIONS



Sample Image Used

CLARITY CHARACTERISTICS



KEY TO SYMBOLS

Red symbols indicate internal characteristics.
Green symbols indicate external characteristics.

COLOR

D E F G H I J Faint Very Light Light

CLARITY

FL IF VWS¹⁻² VS¹⁻² SI¹⁻² I¹⁻³

Flawless	Internally Flawless	Very Very Slightly Included	Very Slightly Included	Slightly Included	Included
----------	------------------------	--------------------------------	---------------------------	----------------------	----------



December 13, 2025

IGI Report Number **LG744513676**

Description	LABORATORY GROWN DIAMOND
-------------	--------------------------

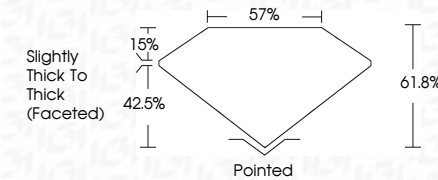
Shape and Cutting Style **HEART BRILLIANT**

Measurements **9.20 X 9.78 X 6.04 MM**

GRADING RESULTS

Carat Weight **3.27 CARATS**

Color Grade **D**

Clarity Grade **FLAWLESS**

ADDITIONAL GRADING INFORMATION

Polish **EXCELLENT**Symmetry **EXCELLENT**Fluorescence **NONE**Inscription(s)  LG74451367

Comments: As Grown - No indication of post-growth treatment.

This Laboratory Grown Diamond was created by High Pressure High Temperature (HPHT) growth process.

Type II



IG



© IGI 2020, International Gemological Institute

FD - 10 20

www.igi.org

THIS DOCUMENT WAS PRODUCED WITH THE FOLLOWING SECURITY MEASURES: SPECIAL DOCUMENT PAPER, INK SCREENS, WATERMARK, BACKGROUND DESIGNS, HOLOGRAM AND OTHER SECURITY FEATURES NOT LISTED AND DO EXCEED DOCUMENT SECURITY INDUSTRY GUIDELINES

December 13, 2025
IGI Report No LG744513676
HEART BRILLIANT

9.20 X 9.78 X 6.04 MM	Carat Weight	3.27 CARATS
	Color Grade	D
	Clarity Grade	FLAWLESS
	Depth	61.8%
	Table	57%
	Girdle	Slightly Thick to Thick (measured)
	Culet	Pointed
	Polish	EXCELLENT
	Symmetry	EXCELLENT
	Fluorescence	NONE
	Measurements (mm)	9.20 X 9.78 X 6.04

Comments:
As Grown - No indication of post-growth treatment
This Laboratory Grown Diamond was credited by High Pressure High Temperature (HPHT) growth process.
Type II